

**KIND Purchasing, recording and compiling the
Operation manual of the all-in-one machine**

KD-LC-8M



catalogue

一、Precautions for the use of live broadcasting machine.....	3
Product and Service Disclaimer.....	4
二、Product features.....	6
2.1 System chart.....	8
三、The back interface and control panel interface of the live broadcast machine.....	9
(1) Introduction to the control panel of the broadcast machine.....	9
(2) Introduction to the ports on the back of the broadcast machine.....	10
(3) This section describes the interfaces on the back.....	11
3.1 This section describes the functions of the control panel	14
四、Operation and introduction of live broadcast software.....	19
1、Main interface introduction	19
2、Video management.....	20
3、Online packaging.....	22
4、Matting management	26
5、Software mixer	28
6、Network management	29
7、Push flow management	31
8、Live synchronization.....	35
9、NDI Live	36
10、SRT manager	37
11、Language interface.....	37
12、PGM setup.....	37
13、Monitor 1-10 window Settings.....	40
五、Contact us.....	49

一、Precautions for the use of live broadcasting machine

- Before use, please read this manual carefully and keep this manual properly ;
- Please observe the warning signs and instructions on the product;
- Please unplug the machine before cleaning. Do not use alcohol, thinner, insecticide or other volatile solvents, as doing so may deform the housing or damage the surface;
- The operating system is Windows 11 X64;
- Disk C is a system disk, disk D and disk E are data disks, and disk F is a system backup disk. Do not delete files in the disk;
- If the system fails, use the system backup file (on disk F). GHO file) can be restored;
- To maximize system performance, set high performance in system power options;
- Do not use this product near water;
- Do not place the product in an unstable place, such as wheelbarrow, stand, etc., to avoid falling and causing serious damage to the product.
- The opening holes on the outside, back and bottom of this product are for heat dissipation. Do not cover or plug these opening holes to avoid overheating. Avoid placing the product on objects with similar surfaces such as beds, sofas, blankets, etc., so as not to plug the opening hole. Do not place this product near fire sources, heating furnaces or hot vents. Do not place this product in a

closed space unless you are sure that a proper vent is available;

- For the power supply used in this product, please follow the mark on the power converter;
- When using the extension cable, please make sure that the total power/total amperage used must not exceed the total amperage loaded by the extension cable;

• Do not insert anything into the body opening to prevent short circuit. Do not spill any liquid on this product

- Do not disassemble and repair without authorization。

- If any of the following occurs, unplug the product and consult a qualified technician;

① The power cord or plug is damaged or unraveled;

② A liquid has seeped into the product;

③ If this product has been rained on or spilled with water;

④ Damage caused by computer system viruses and malware is not covered by the warranty;

- The equipment is packed in the original packing box or similar packing box during transportation, which can reduce the strong vibration of the equipment;

Product and Service Disclaimer

The information provided in this manual is intended as a guide only. At all times, KIND strives to

provide correct, complete and appropriate information. However, KIND cannot exclude that some information in this manual may be incorrect or incomplete, and this Manual may contain typos, omissions or incorrect information. KIND recommends that you double-check the accuracy of the information in this document, and KIND is not responsible for any omissions or errors. Or any subsequent loss or damage caused by the information provided in the contents of this Manual, further information about the contents of this manual or products can be contacted by local offices or KIND headquarters.

For your safety, do not expose the equipment to rain or moisture. In case of failure, do not remove the chassis. For after-sales matters, contact the manufacturer to ask professional engineers for maintenance

When recording or streaming important data, be sure to check the device connection beforehand, or perform a streaming test first, to ensure that the system can operate properly and avoid data loss

According to copyright law, recorded video or audio may not be used for purposes other than personal enjoyment without the permission of the copyright owner. Note that for live performances, shows and exhibitions, even your personal entertainment may be restricted.

二、Product features

Product specification

Model number	KD-LC-8M
Power source	AC110V-240V,50Hz,400w
Operating temperature	0-40°C
Dimension	(L*W*H) 410mm*370mm*160mm
Weight	10kg
Video input	SDI×4(assorting), HDMI(4K)×8,HDBaseT(4K) ×4, NDI×10,Stream×10,SRT×10,DDR×10
Video output	NDI×1,SRT×1; HDMI×2
Audio input	Stereo (L,R) IN RCA×5,MIC XLR×5
Audio output	Stereo (L,R) OUT RCA×1,Balanced XLR OUT×2,MonitorΦ3.5×1,Playback monitorΦ3.5×1,The director calls MICΦ3.5×2
Other interface	USB3.0×2, ,RJ45×1 ,
Sound console	Digital mixer×5,Analog mixer×5,Audio hardware delay device×1

Record	MP4,WMV,AVI,MKV,MOV,FLV,TS, MPEG
Live broadcast	HTTP;RTMP,NDI,SRT
Controls	PTZ control
Subtitles	CG-Alpha DVE, Video playback, Virtual matting system
Disposition	Intel i9 CPU 12900T,DDR5 32G,1TB SSD
System	Windows 11

Video: 4K 60FPS switching station, input signal: 3G-SDI (optional) 4K HDMI/4K HD Base T+DDR

(video, pictures, PPT, video playback) +Stream network flow (push, pull) +NDI+SRT, mixed switching;

Audio: Digital mixer + analog mixer;

Recording resolution: up to 3840*2160;

Recording format: MP4、WMV、AVI、MKV、MOV、FLV、TS、MPEG

Camera PTZ control;

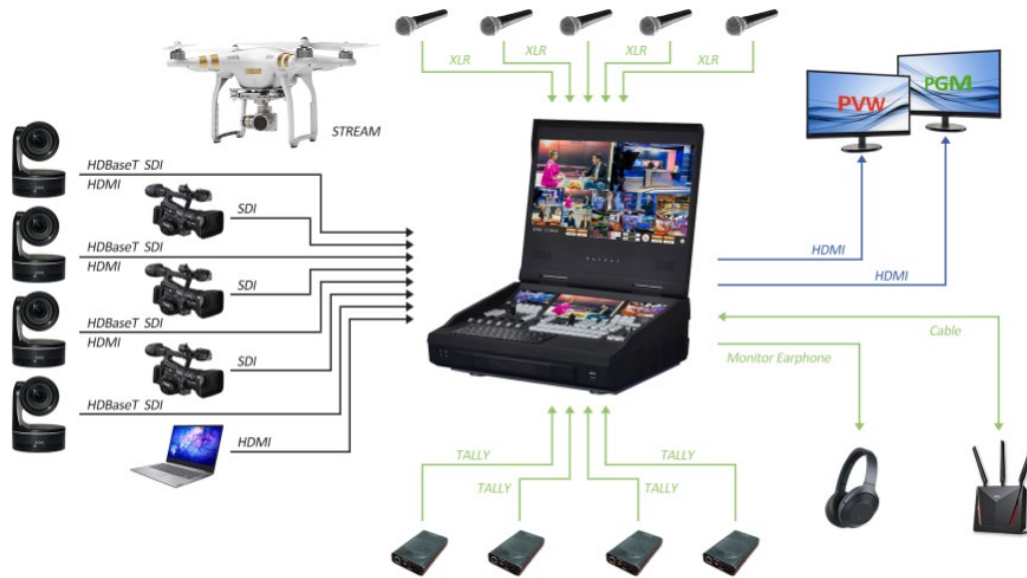
64-bit kernel, 4K 60fps, Alpha online packaging system, virtual matting system, audio and video

editing system;

Applications: studio, educational recording, media live, all kinds of conferences and events live;

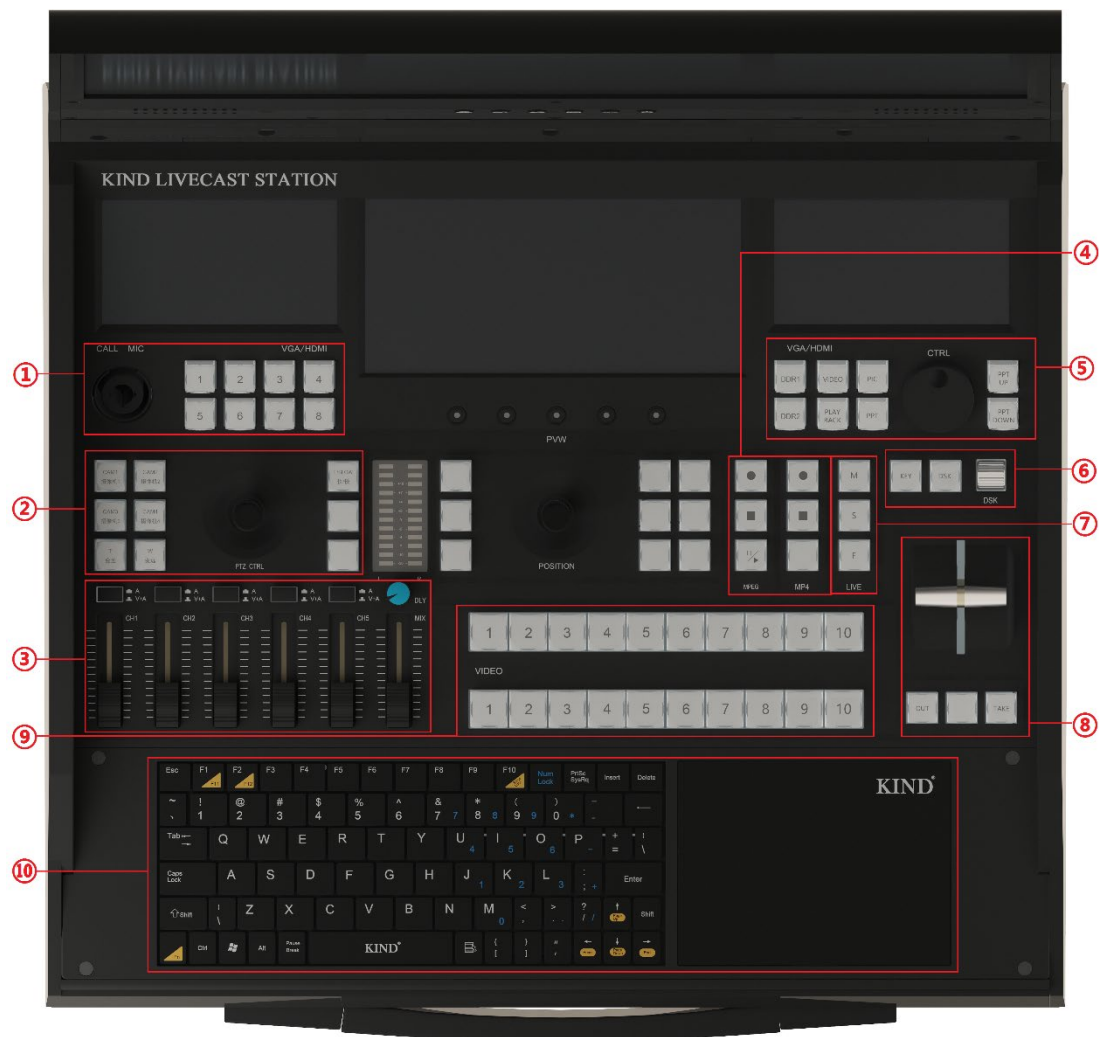
dimension: (L*W*H) 410mm*370mm*160mm; weight: About 10kg;

2.1 System chart



三、 The back interface and control panel interface of the live broadcast machine

(1) Introduction to the control panel of the broadcast machine



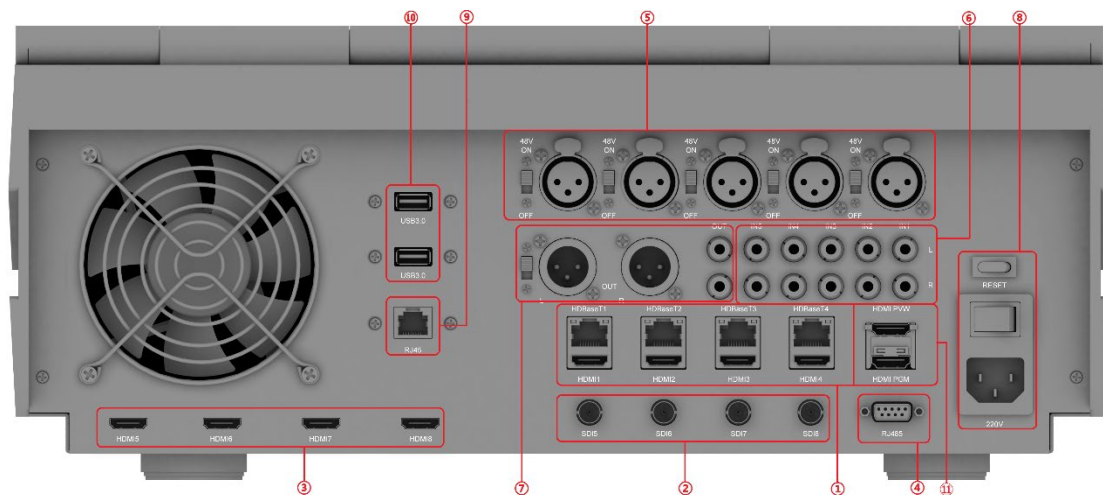
① Camera preset bit call

② Slot channel address, speed adjustment and zoom

③ Mixing console, analog audio and audio switches

- ④ Record, stop switch key
- ⑤ Local material video, pictures and PPT switching and page turning
- ⑥ Keystroke, subtitle shortcut
- ⑦ Video playback shortcut key
- ⑧ T-type push-rod, multi-mode switch key
- ⑨ PGM and PVW video switcher
- ⑩ Keyboard and mouse combination

(2) Introduction to the ports on the back of the broadcast machine



- ① 1-4 4K HDMI/4K HD Base T video input
- ② SDI video input
- ③ 5-8 HDMI video output
- ④ 485 interface

⑤ 1-5 Canon ports

⑥ Audio stereo input

⑦ MIC, stereo output



⑧ DC power port, power switch

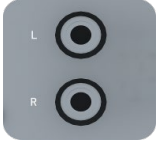

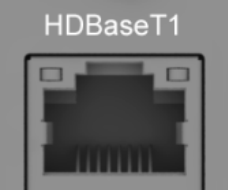

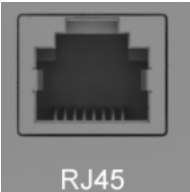


⑨ RJ45 network interface

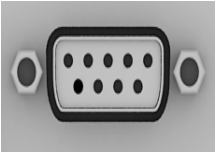


⑩ 3.0 USB port

⑪ HDMI video output

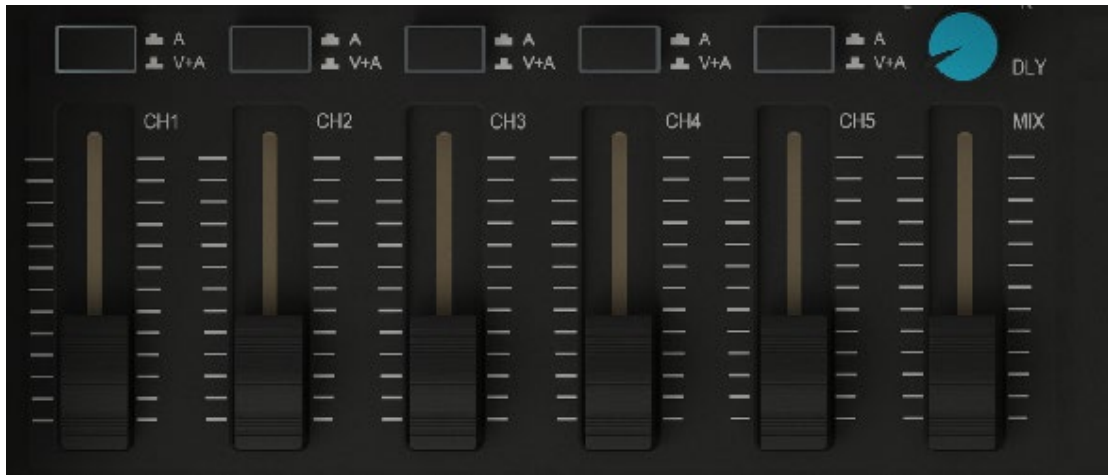
(3) This section describes the interfaces on the back

port	Instructions
 A close-up photograph of an XLR output port. The port is circular with three pins in the center. The letter 'L' is printed on the left side of the port's housing.	L/R Audio output XLR Balanced analog audio output interface
 A close-up photograph of an XLR input port. The port is circular with three pins in the center. The word 'MIC' is printed below the port's housing.	1~5 Audio input XLR balanced analog audio input interface and each with 48V phantom power switch (support for professional microphone power supply)

	<p>1 to 5 Audio input RCA Stereo analog audio input (left/right channel) OUT Audio output RCA stereo analog audio output interface</p>
	<p>8 HDMI input ports, support 4K input</p>
	<p>1-4 HD Base T video inputs</p>
	<p>HDMI video output interface, can be connected to the display</p>
	<p>The network port can access the network for software parameter debugging, live broadcast, and stream pushing</p>
	<p>USB3.0</p>
	<p>Power switch: Power on or off</p>

	<p>485 Control interface: adopts RS485 control signal and supports PELCO-D and VISCV control protocols</p>
	<p>SDI1-4 video input ports, supporting signal specifications 1080i50 Video source input (optional)</p>
	<p>DC power interface</p>

3.1 This section describes the functions of the control panel



1 to 5 channel audio gain adjustment, corresponding to the backplane 1-5 audio source

input,A/V+A each sound switch, press to turn on

The sound level is controlled by software

PGM audio gain adjustment.

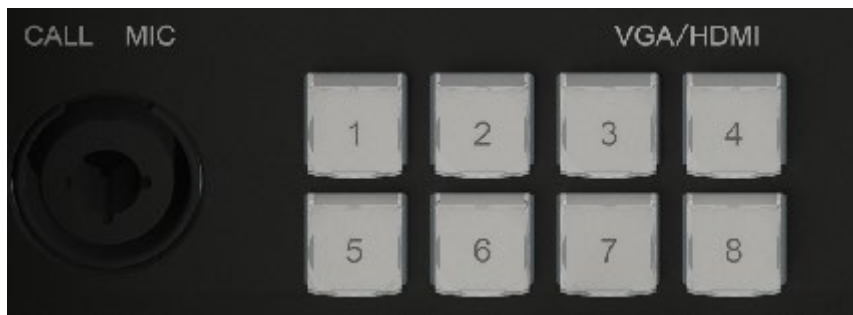


4 Camera channel address, through the switch button to switch different camera, the key

light is controlling the current camera, the zoom function of the T/W camera.

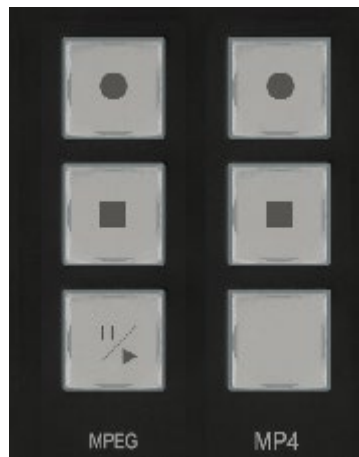


FAST/SLOW: Controls the rotation speed of the camera. When the indicator is on, the rotation speed is fast, and when the indicator is off, the rotation speed is slow



8 camera preset bits, use this button to quickly adjust the camera Angle

Press 1 and 5 at the same time to set the preset bit



The first set of keys is the MPEG format recording, stop and live button, the indicator light is recording, recording and live button can be used at the same time, or can be recorded separately



DSK: Subtitle shortcut key: The indicator lights up and the subtitle function starts. It needs to be used together with other keys;



KEY: Image tapping shortcut key: The indicator is on, and the image tapping function is enabled.

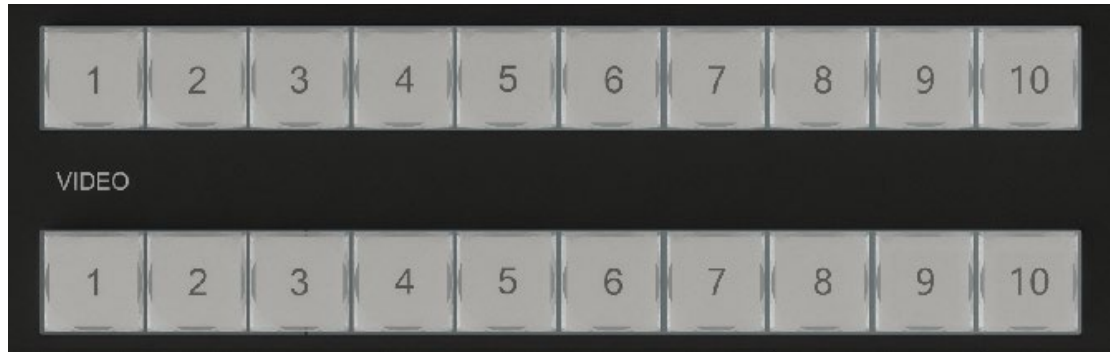


VIDEO, PIC, and PPT can be played in one of the DDR modes;

PPT UP and PPT DOWN are page turning functions, enabling quick page turning during PPT playback.



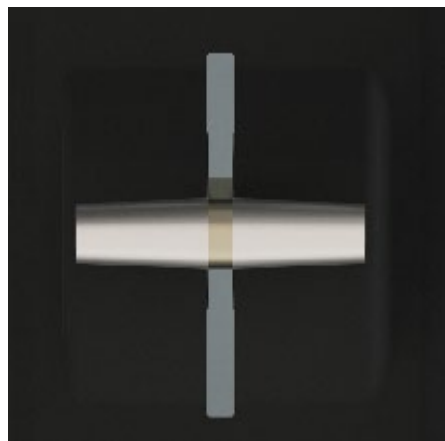
M, S, and F are played back in minutes, seconds, and frames respectively.



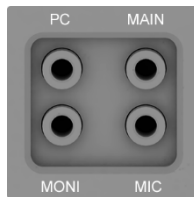
Hardware switching between PVW and PGM



The switch between Cut and TAKE buttons can switch PGM and PVW lenses, making the transition more convenient and fast.



T-type push rod: The T-type push rod is a manual transfer mode to complete the switch between PGM and PVW, and the T rod is pushed to the end to indicate the completion of the transfer



The PC has 3.5 system sound output;

MAIN is a 3.5 listening interface;

MONI is a 3.5 call radio interface;

The MIC is a 3.5 microphone port;

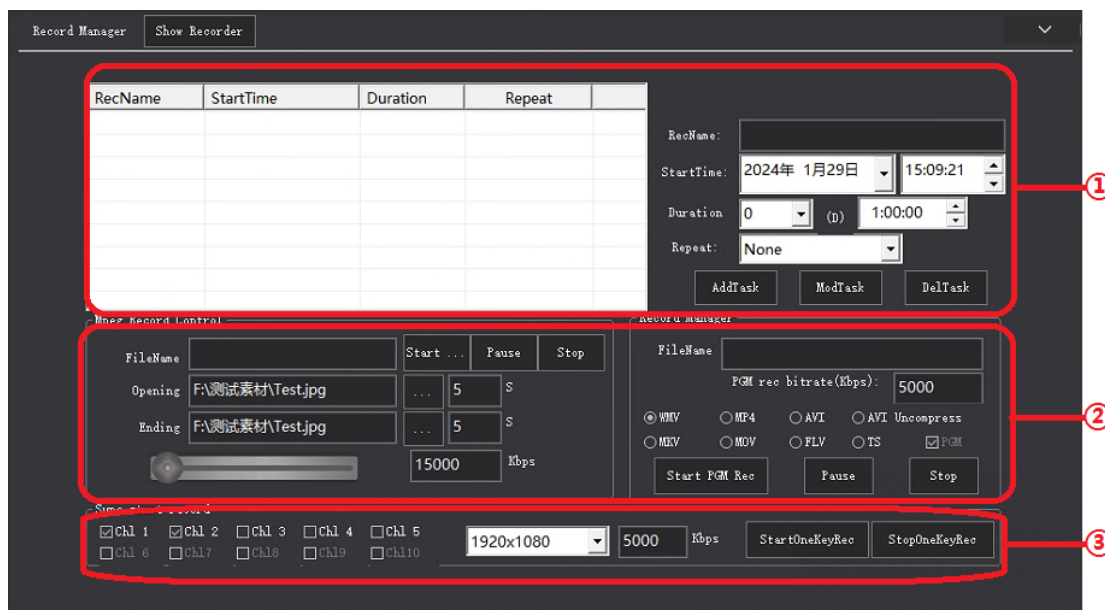
四、Operation and introduction of live broadcast software

1、Main interface introduction



The main interface of the software is composed of PGM window, PVW window, 10-channel signal source pre-monitoring window, recording, live broadcast, push stream control panel and software mixer

2、 Video management



① Scheduled task: This function allows you to set scheduled recording tasks;

(1) First set the time to start recording;

(2) Set duration;

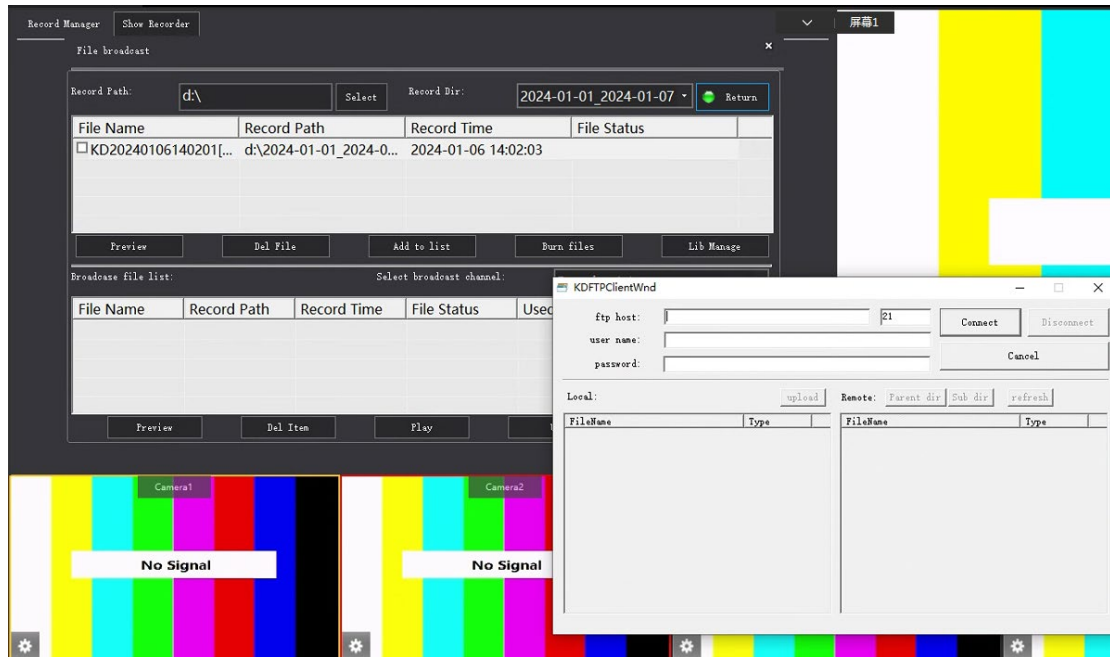
(3) Set the repeat mode. The repeat mode can be no repeat, daily, or weekly;

(4) After the Settings are complete, the recording information is displayed in the white table;

② Recording: The software recording format is divided into MPEG, WMV, MP4, AVI, AVI Uncompress, MKV, MOV, FLV, TS format, you can add the title and end of the film, set the stream and other functions, click to start PGM recording after the completion of the recording click stop button, the recording is completed.

③ The synchronous recording function can record each preview window and adjust the resolution and bit rate of the video.

After the recording is completed, click video to view, and you can view, burn, delete, preview and store the video from this position.



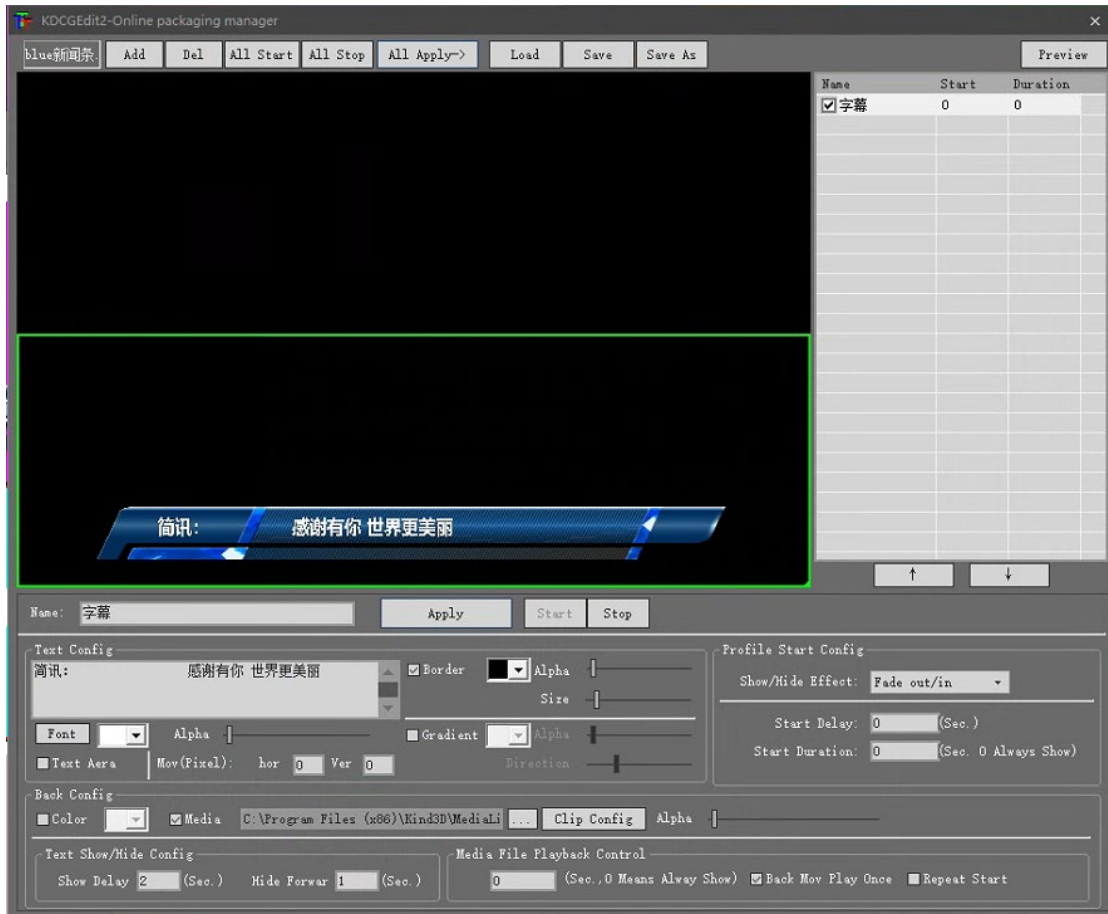
This interface function can view the recorded files in the current directory, and through the library management can be FTP upload server in the form of file transfer, as shown in the figure.

3、Online packaging

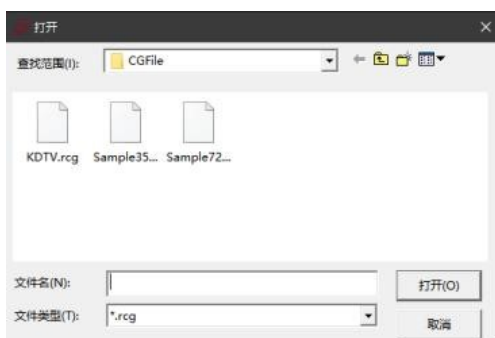


The online packaging function includes the platform function and the Alpha channel special effect captioning function, which can be used in double layer superposition.

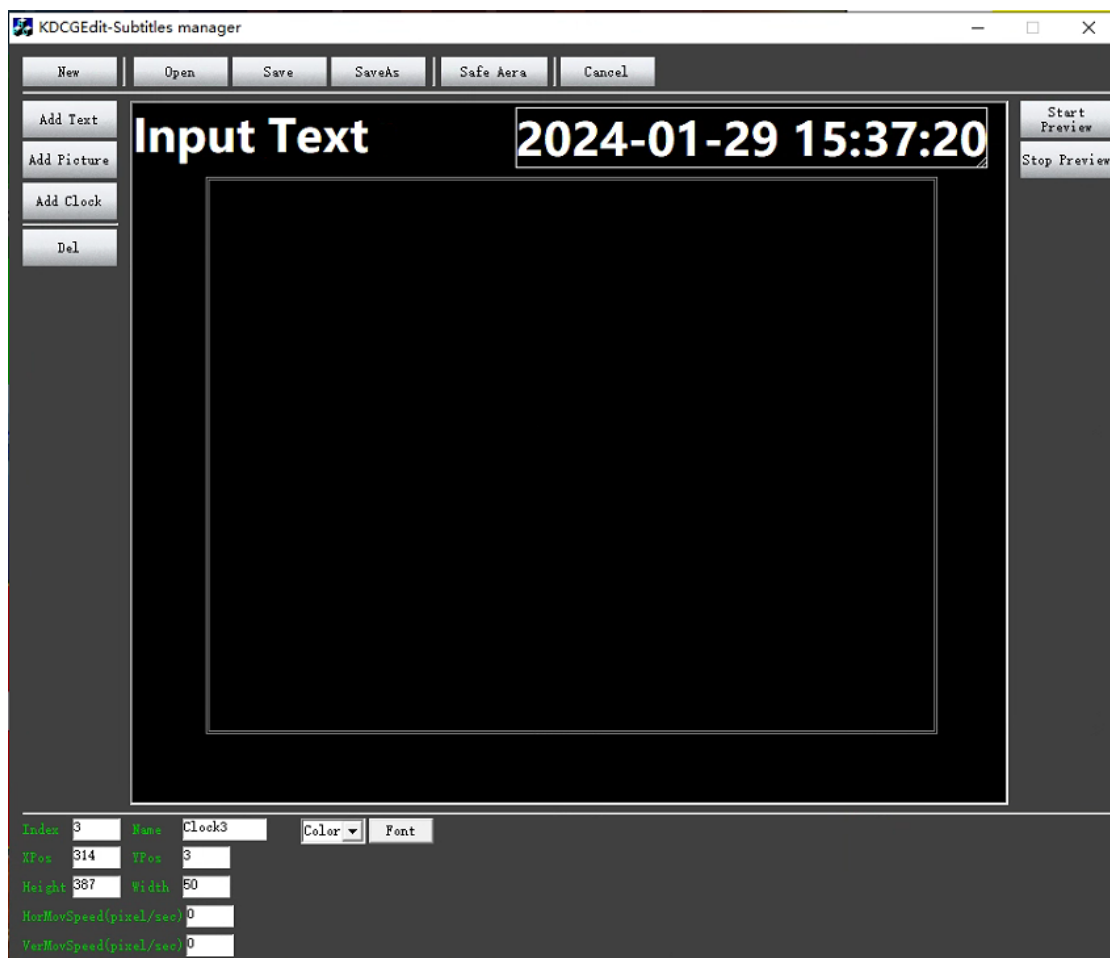
Select any subtitle in the picture and click Edit to enter the subtitle editing mode. You can set subtitle according to your needs. Select the corresponding alpha subtitle and click the edit button to enter the current special effects subtitle editing template as shown below



Click the edit button next to the logo as shown below to add the logo and create the logo function



This mode is mainly used for the creation of the platform logo position, editing interface operation as shown in the following figure



DVE MODE When a matching hook is added to the front of the DVE mode, you can implement scenarios such as video connection. Click Edit, you can set the signal source, etc., as shown below;



DVE editing only needs to define the channel selection on the media source of the corresponding dialog window, as shown below.



4、 Matting management

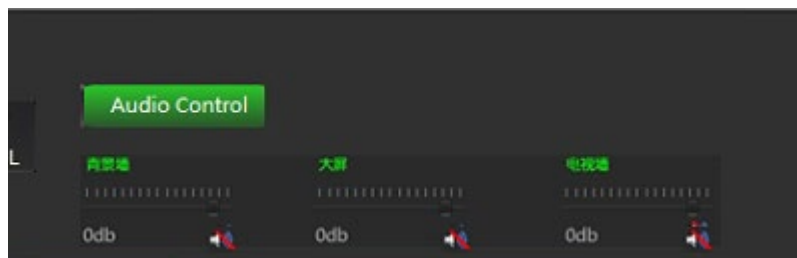
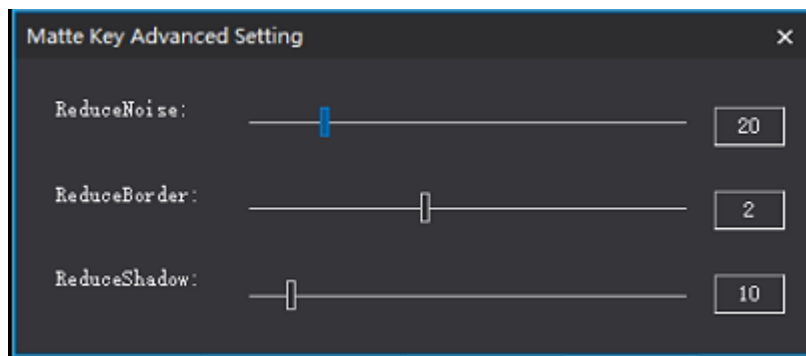


Click the photo picking button to enter the photo picking mode, as shown in the figure: (Note that the PVW pre-monitoring signal of the two-digit photo picking machine should be switched to the environment with green screen to perform the photo picking operation).

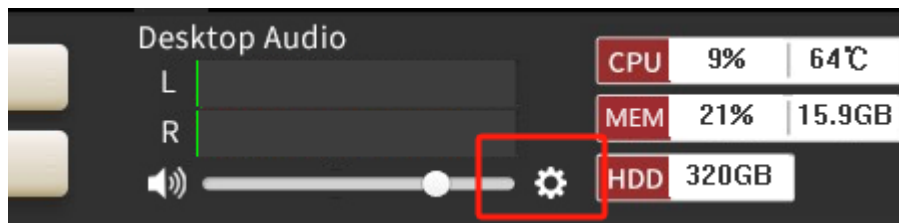
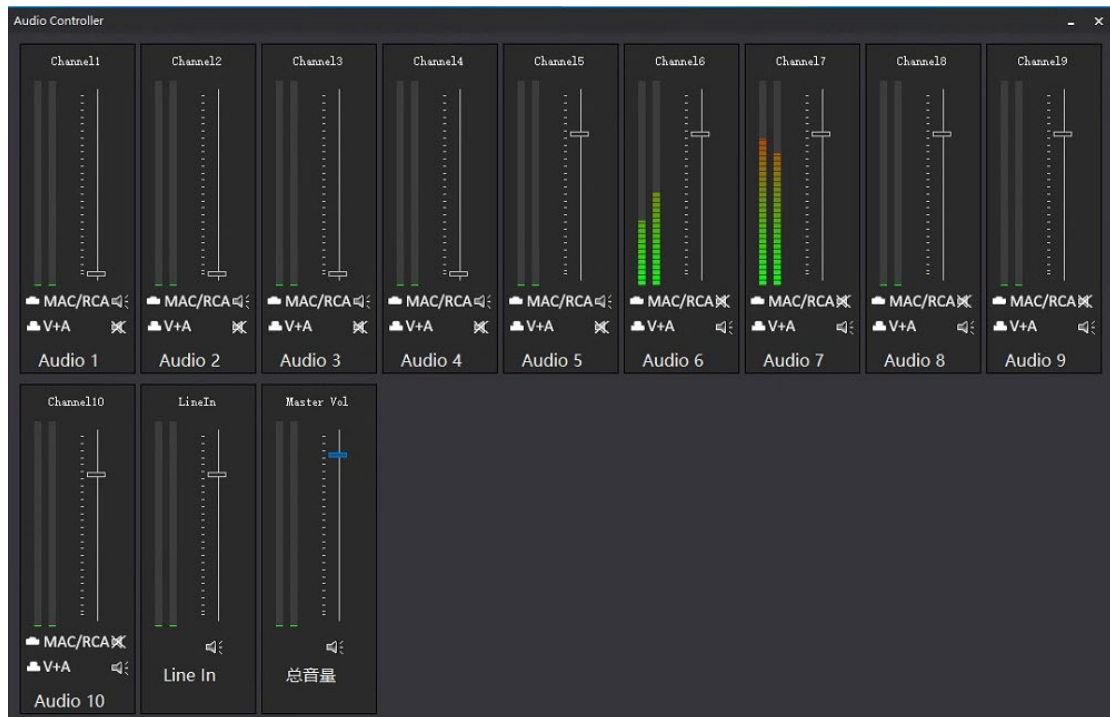
After the software enters the photo picking interface and then enters the PVW interface, click the green background in the PVW small window for one-click default photo picking. The darker the background color, the cleaner the image effect will be. If the effect is not satisfactory, fine-tune the effect through the edge control bar (Note: if it is still unsatisfactory, please check whether the green or blue background cloth is photo picking green or blue, or whether the background light is qualified). The more pure the blue-green background, the cleaner the image, and the less noise).

After the success of one-click image selection, background video or pictures can be superimposed

through the definition of Beijing wall, and picture-in-picture operation can be performed by adding a large screen or TV wall. The size of picture-in-picture and background content audio can also be adjusted, as shown in the following figure

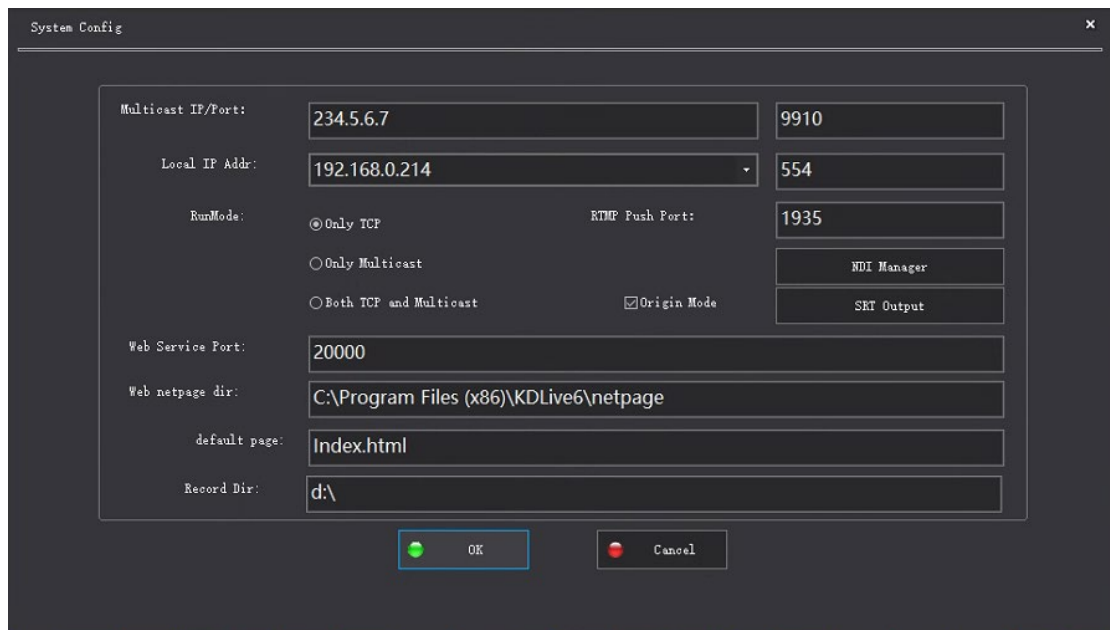


5、 Software mixer



Click the software's Settings button to pop up 10 audio controller, this function is used for each signal source channel NDI and STREAM mode audio adjustment, MIC and stereo audio is still subject to the device mixer.

6、 Network management



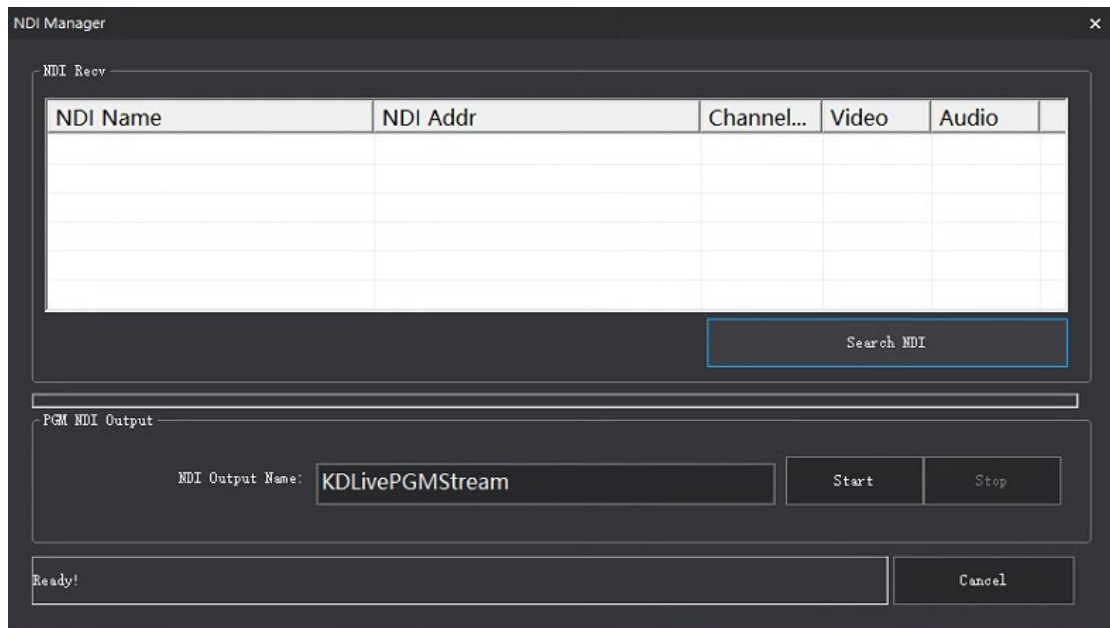
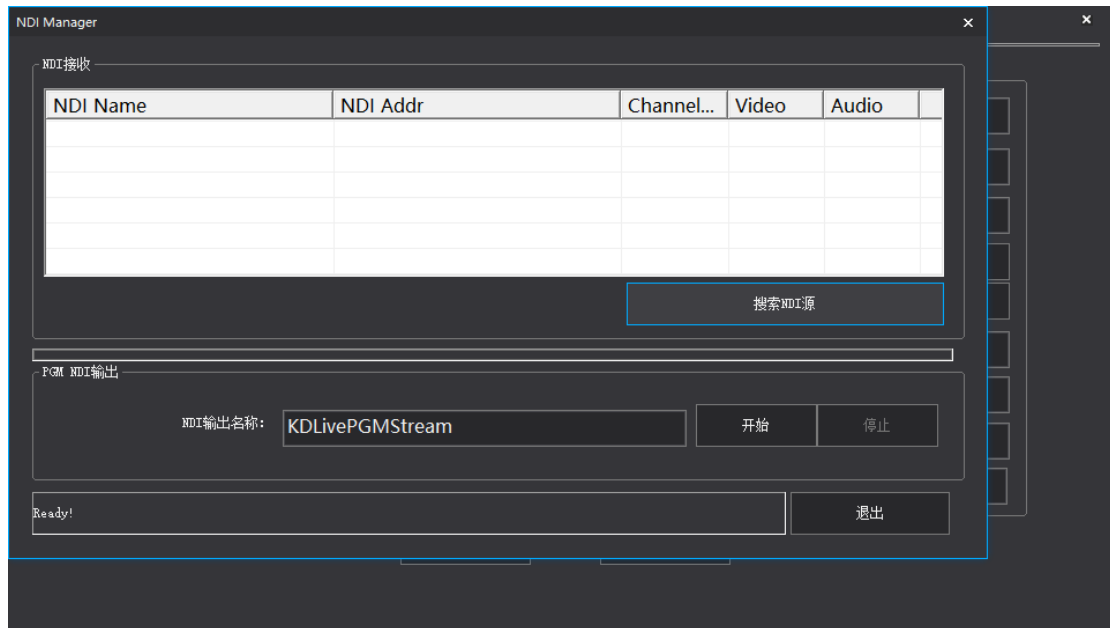
The network management interface can modify the IP address, NDI manager, SRT output, running mode, and recording location of the machine.

The local IP address must be the same as the local IP address. After connecting to the network, restart the software.

The recording location can be changed based on the drive letter displayed on the system disk. The factory setting is D or E disk, depending on the actual situation.

Clear stream mode: After the clear stream mode is turned on, subtitles will not appear on the screen interface of the live stream during the live broadcast.

NDI Manager: After opening the NDI device and connecting to the network, click Search NDI source, and the searched NDI device will appear in the white interface as shown in the following figure

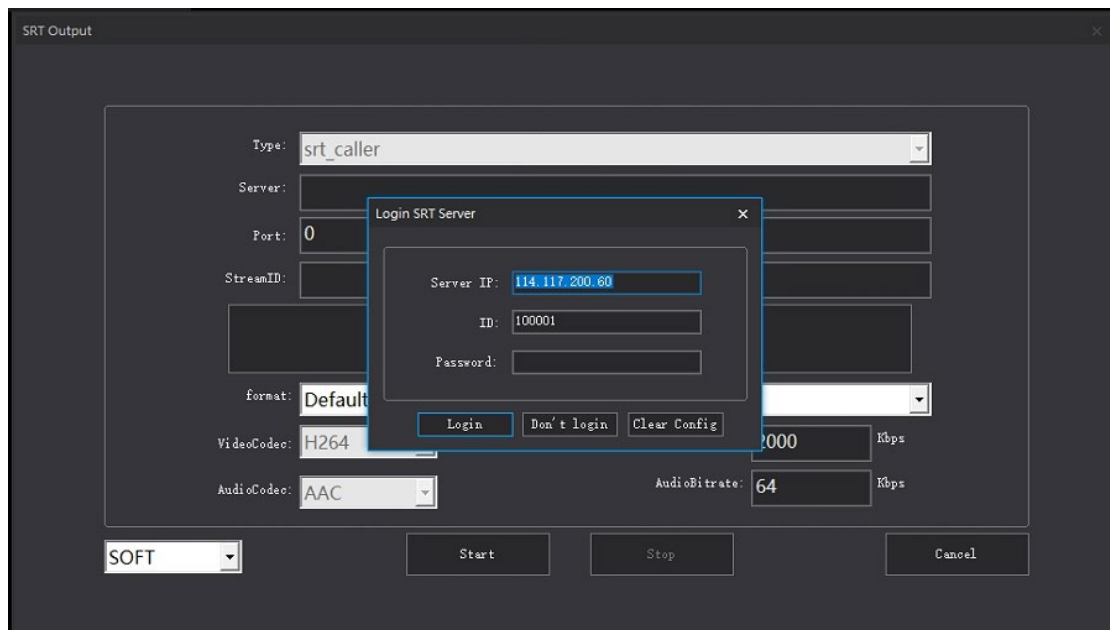


After the device is selected, the source Channel will pop up and Live Channel 1 will select the channel used. Cam serial number is the camera control address. The push, pull, roll, pitch and other movements of the NDI camera can be controlled through the camera address button.

After clicking OK, the NDI video will enter the pre-monitoring window.

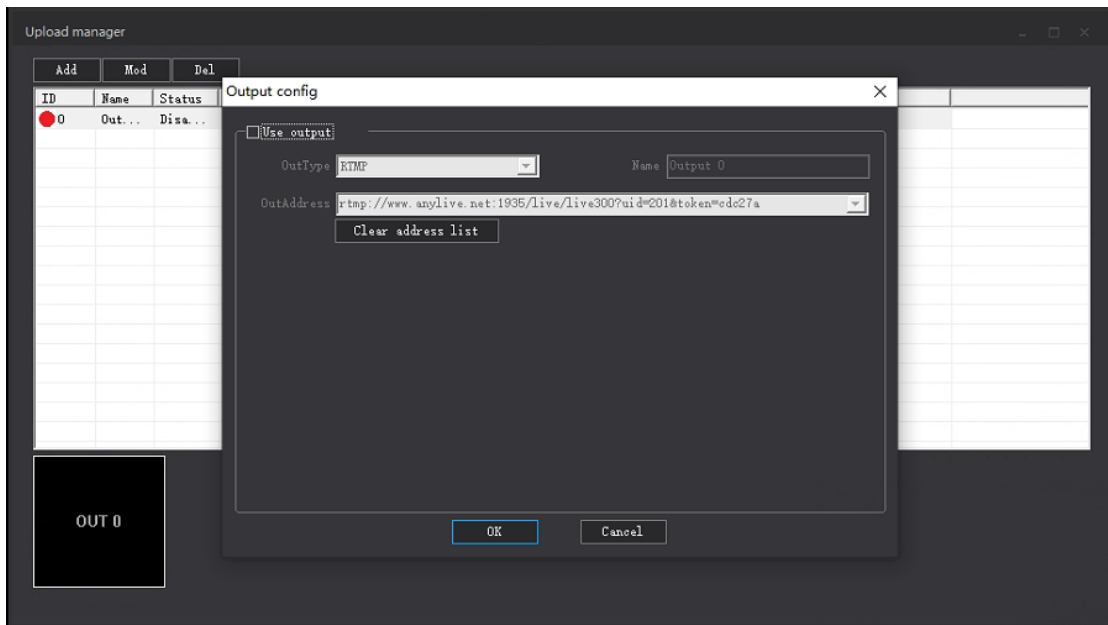
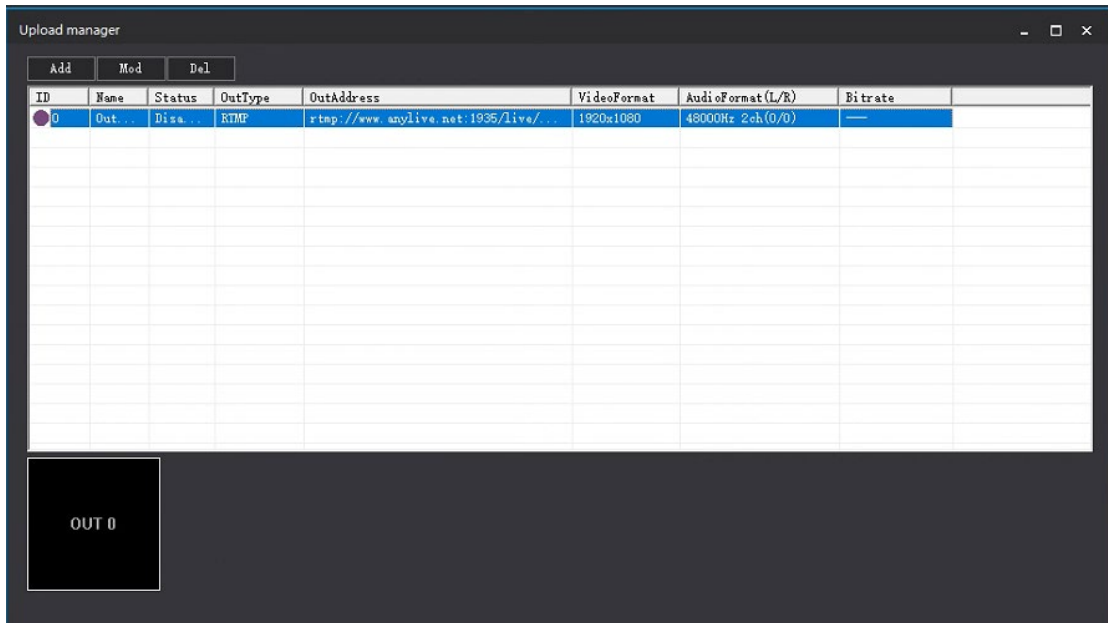
NDI Output: NDI signal transmission can be carried out through this function

SRT output: Pull the picture captured by the camera into the software through the streaming media server for recording and broadcasting, and select the route as shown in the figure (after logging in to the server)

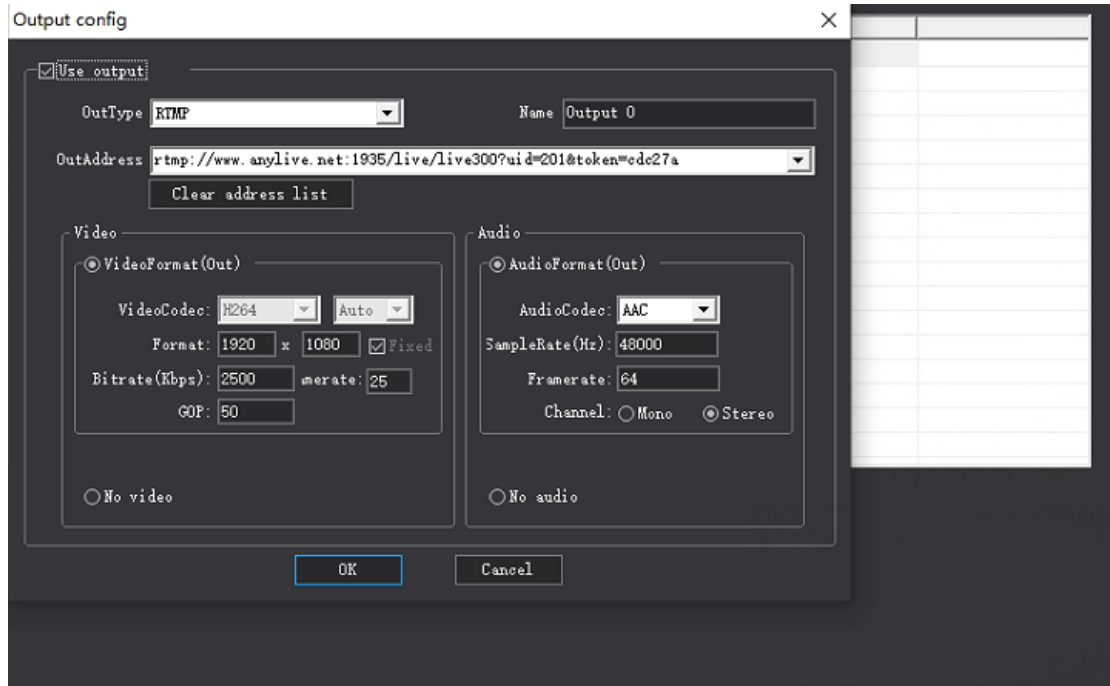


7、 Push flow management

① Click the Push Stream button to open the secondary menu;



② Click Add button

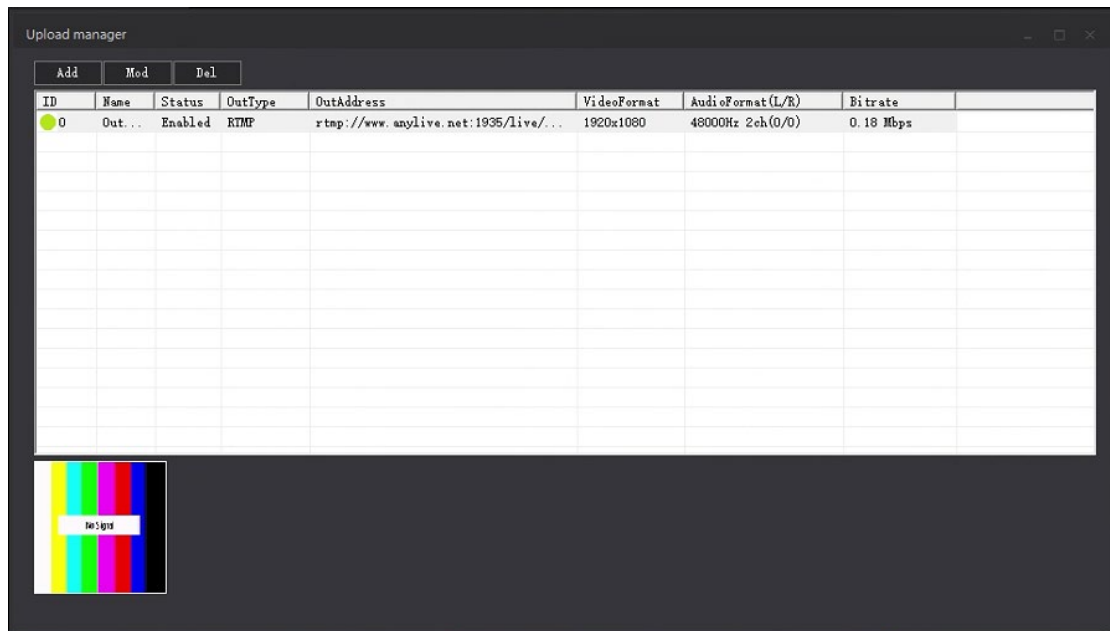


③ Click enable output;

④ Output type default Settings, add name, modify bit rate and resolution, select the correct video and audio

⑤ Enter a valid output address (do not add more symbols or Spaces, to prevent the flow failure);

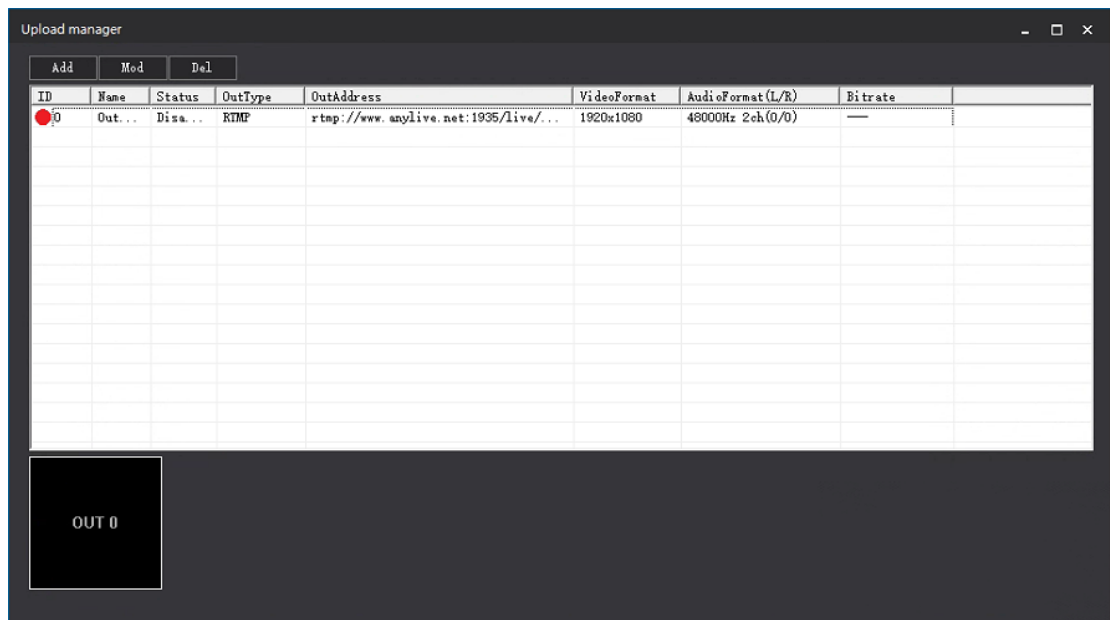
⑥ Click OK to start the push stream service, as shown in the picture



⑦ Double-click the enabled stream push address again, remove the check before enabling output,

click OK, the stream push function is closed;

The push flow can push multiple platforms at once, as shown in the figure



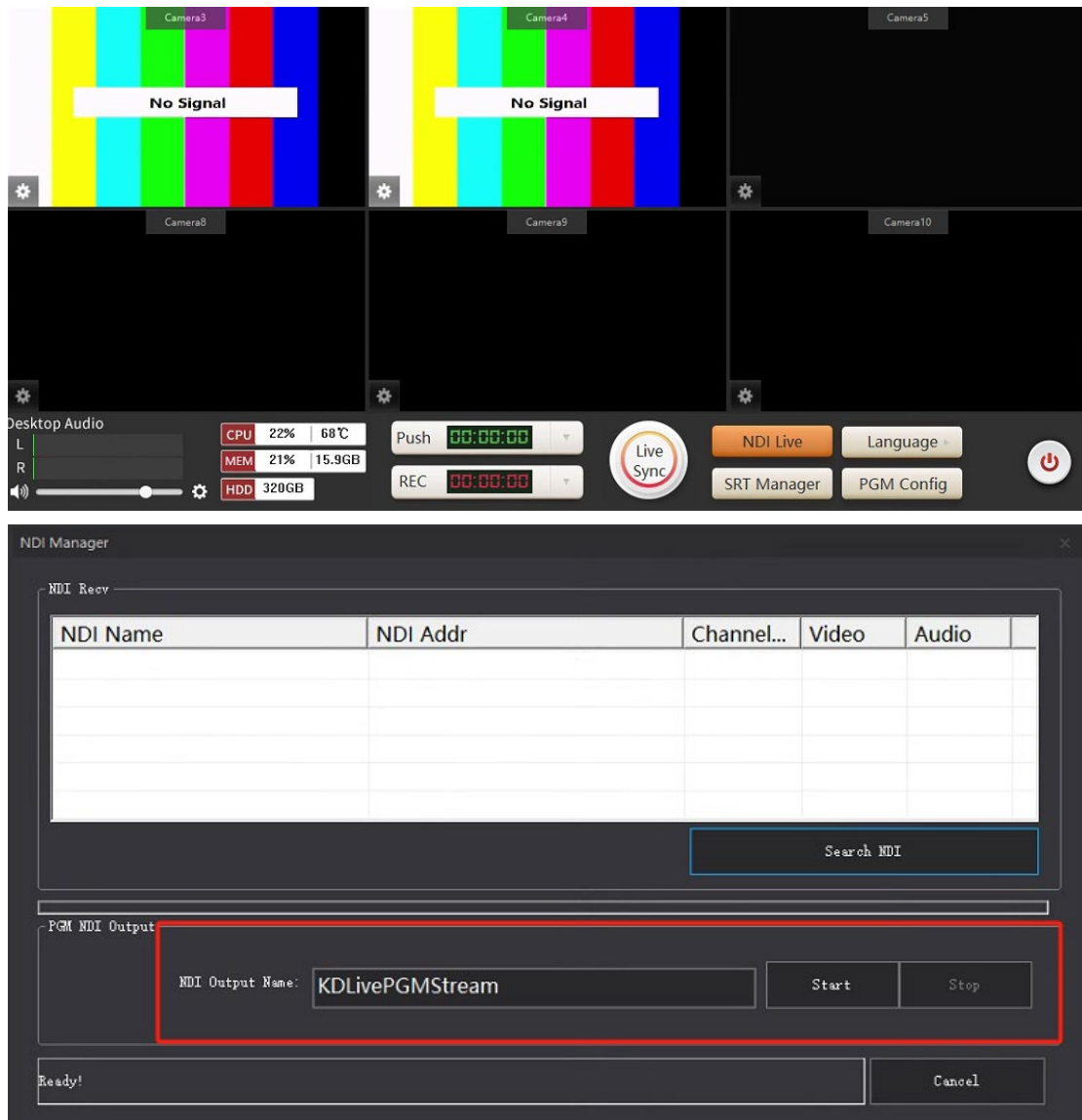
8、 Live synchronization

Live broadcast synchronization: After live broadcast is enabled in the same LAN, enter <http://+IP:20000> to watch live broadcast on the LAN, as shown in the figure (synchronous live broadcast is not enabled, live broadcast is enabled).



After the LIVE broadcast is enabled, the PGM window displays Live.

9、 NDI Live

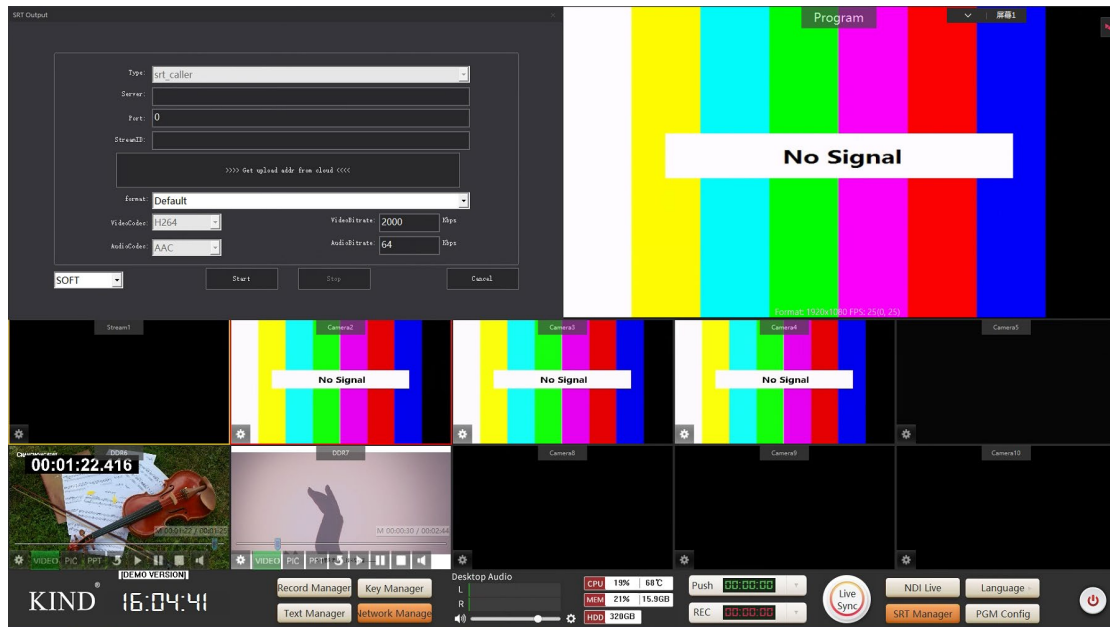


This function is a shortcut key, which is the same as the NDI output function in network Settings;

After the NDI Live button is opened, the NDI signal can be transmitted normally;

10、 SRT manager

The SRT manager is consistent with the SRT output function in network Settings;



11、 Language interface

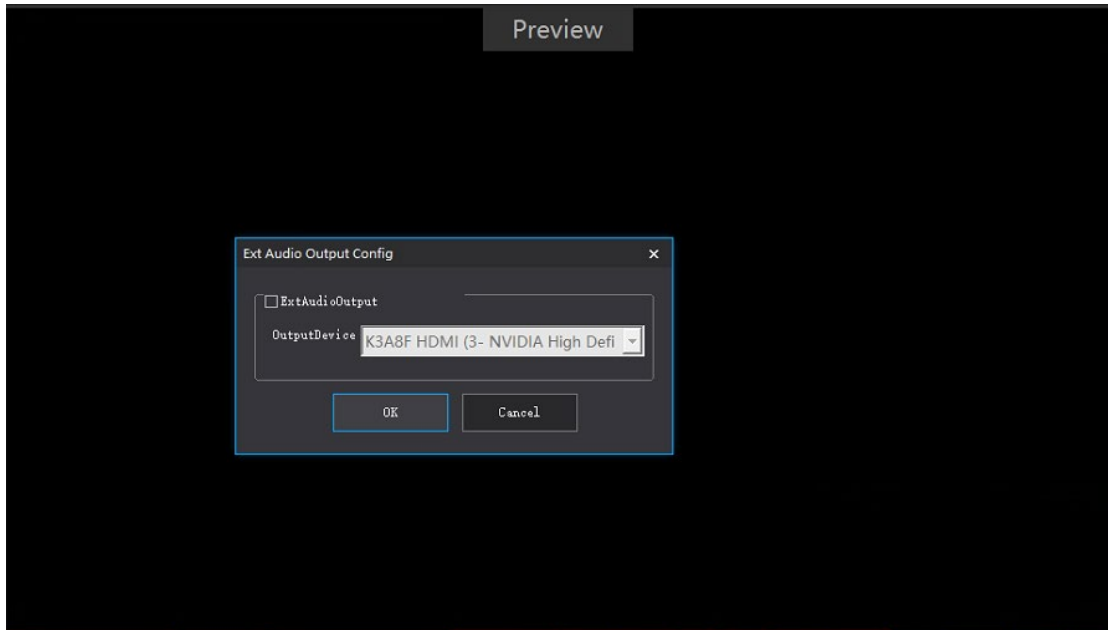
Switch languages such as Chinese and English

12、 PGM setup

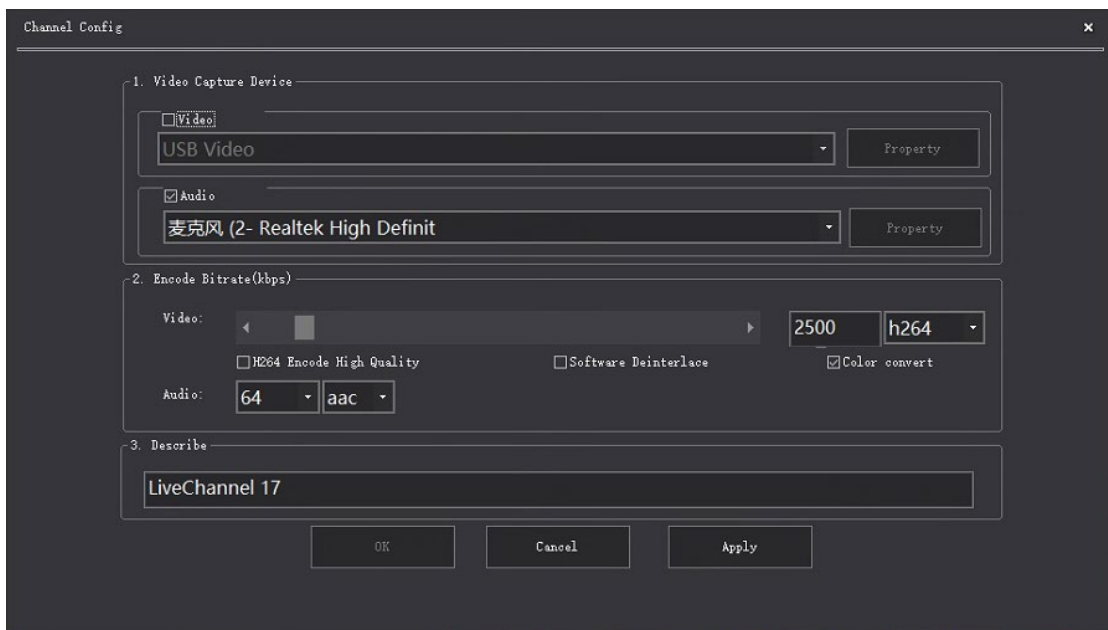
PGM is divided into 4 parts, extending the output Settings, line audio acquisition Settings, PVW

and PGM Settings;

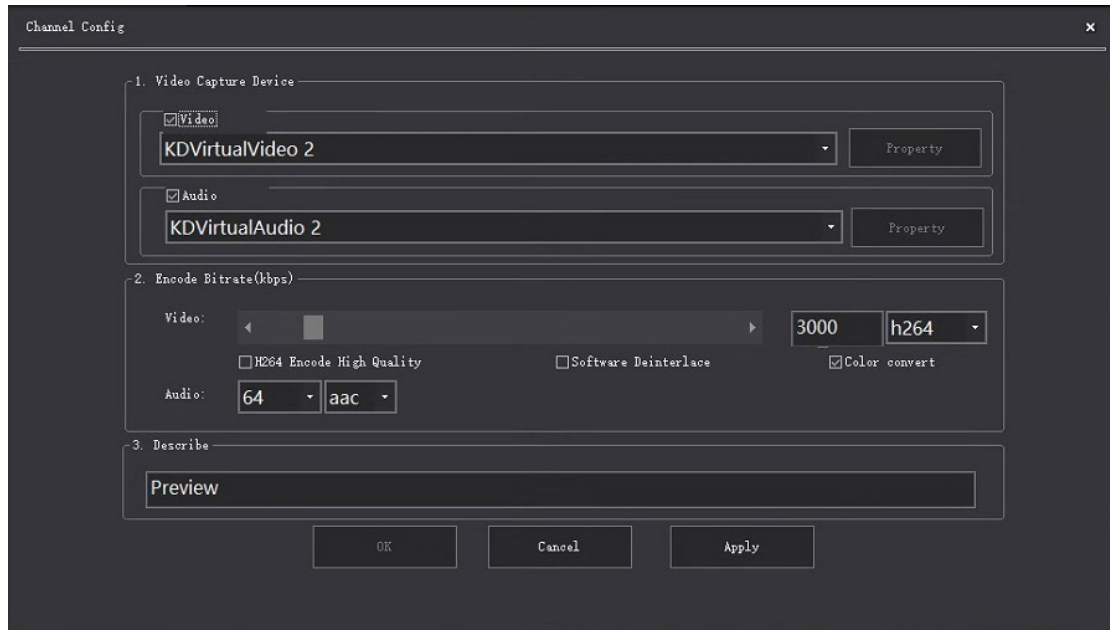
(1)Extended audio output Settings: Click the drop down menu and select Output Device (password 111111).



(2)Line audio capture Settings: Select a mix of microphone, hardware audio and software audio to output to the PGM (password 111111).

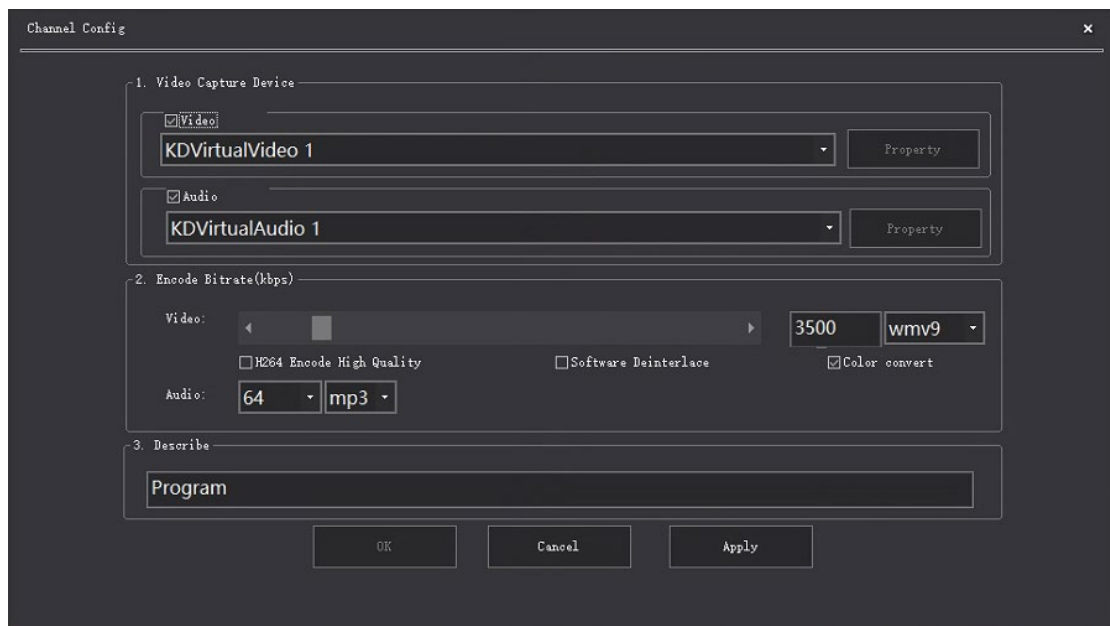


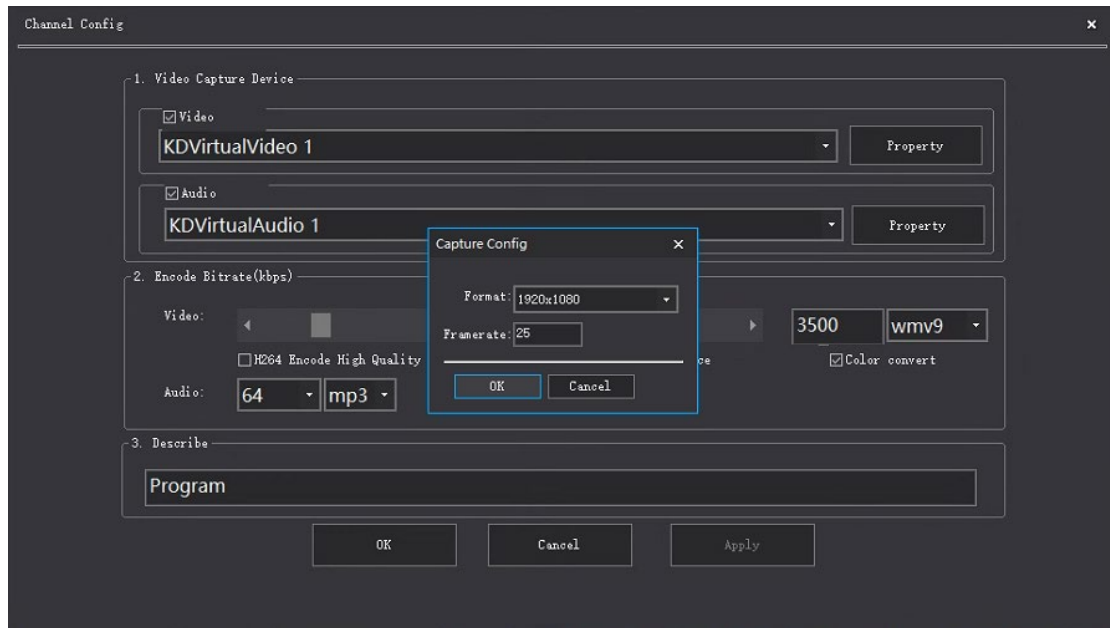
(3)PVW Settings: Video and audio Settings are selected as shown in the figure (password 111111).



(4)PGM Settings: Video and audio selection as shown in the picture (password 111111), click Apply.

Set the bit rate and resolution of the video, click video properties, set the resolution and frame rate of the video (Note: After setting the video and audio, click Apply to set the video properties).



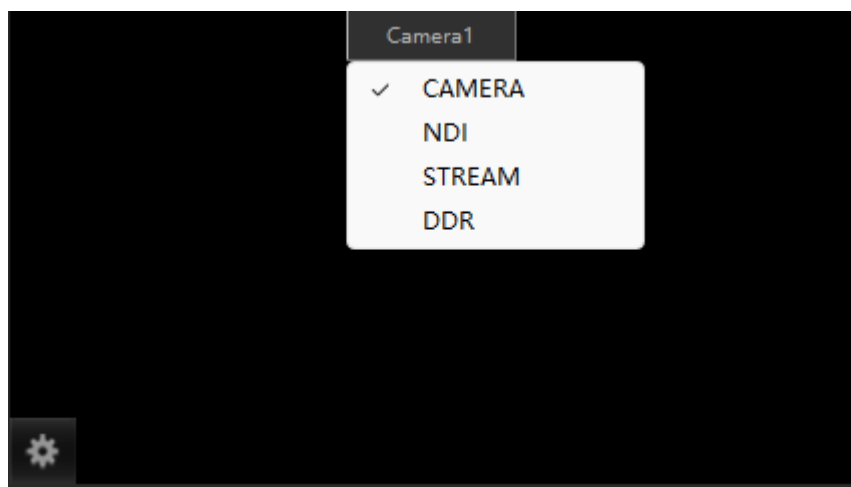


13、 Monitor 1-10 window Settings

1-10 Each window adopts signal composite design, a variety of signals mixed with a channel design,

there are camera, NDI, STREAM and DDR four signal sources can be switched at any time, as shown

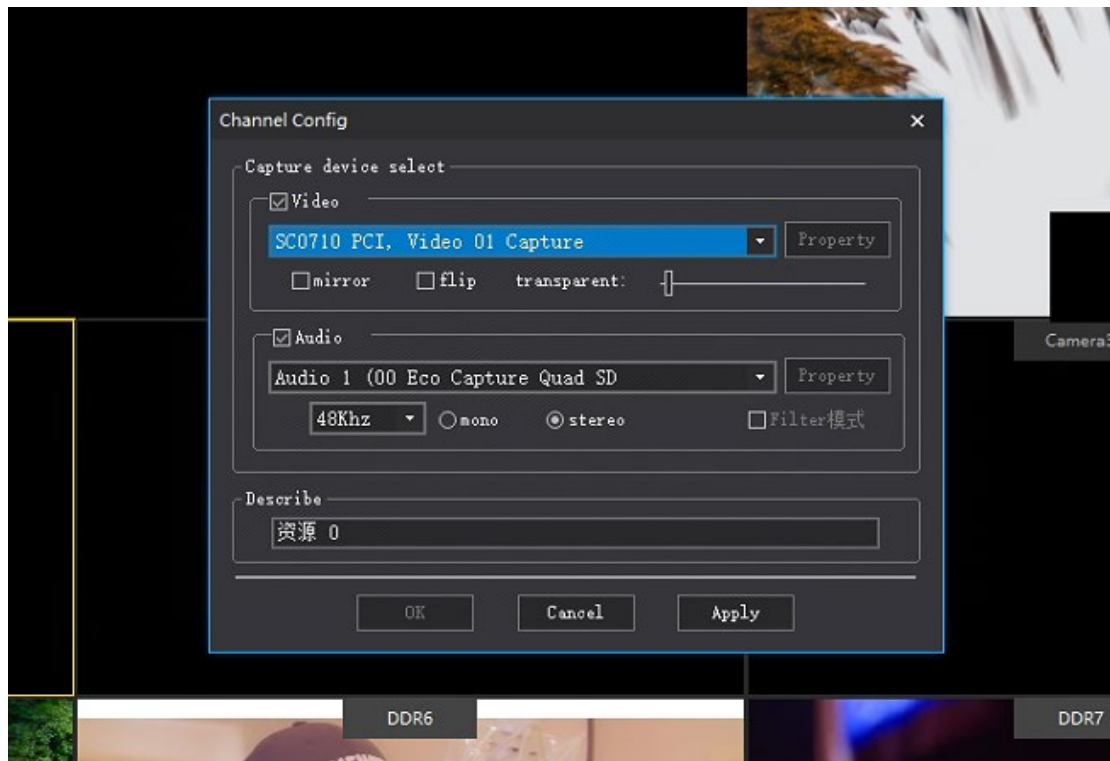
in the figure



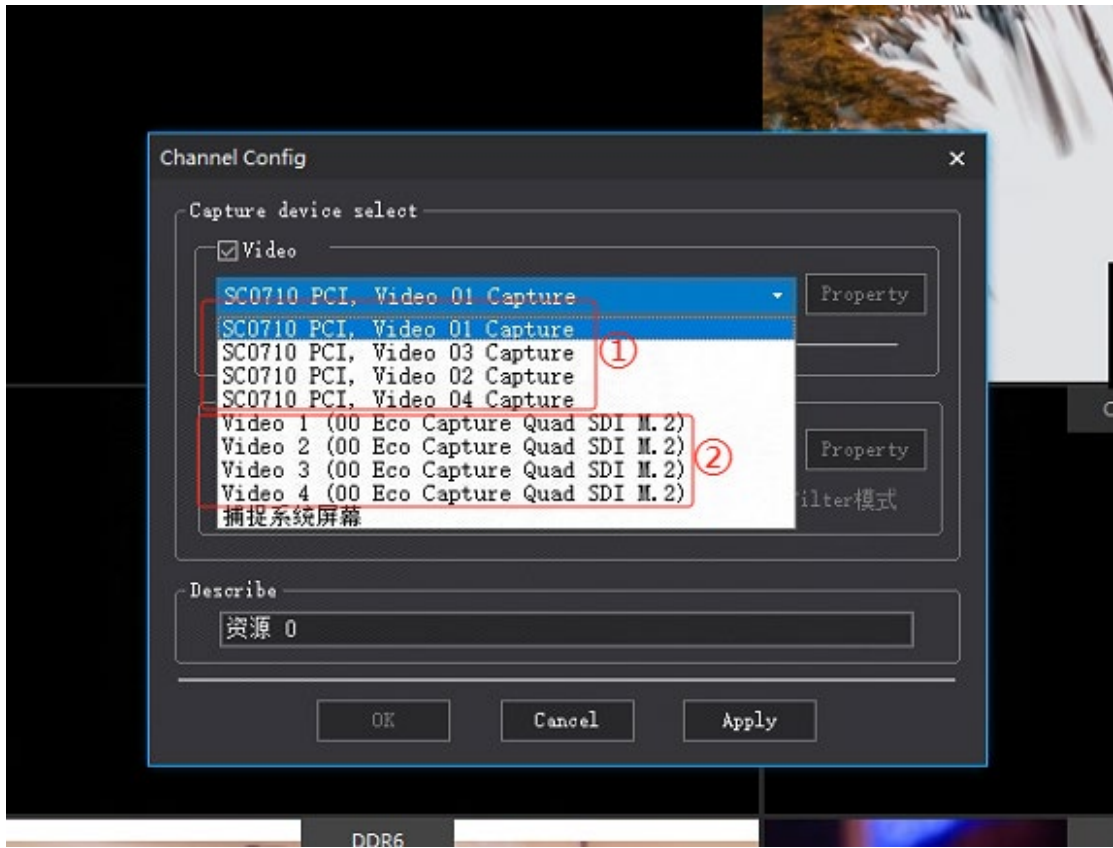
(1)、 Camera: Camera signal source, which can be transmitted through SDI or HDMI;

Camera Setting method:

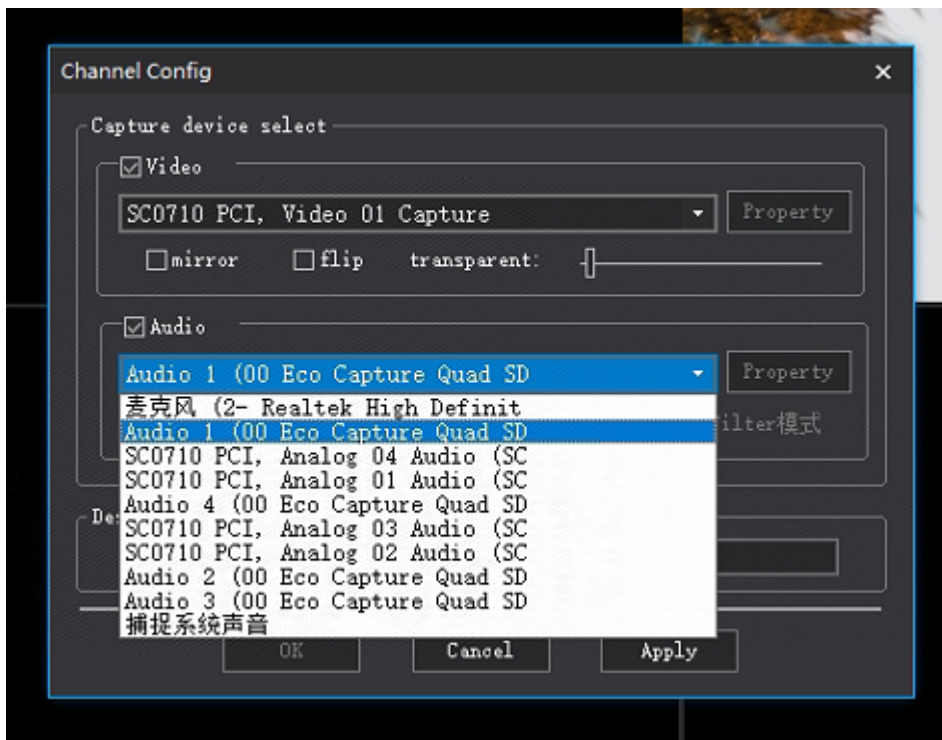
① Click the Settings button in the lower left corner of the preview window, enter the password (111111) and click OK



② Set the video signal as shown in the following figure: PCI1-4 option is HDMI video signal, video1-4 is SDI video signal



③ Set the audio as shown in the figure below, and need to be consistent with the video options as shown in the figure



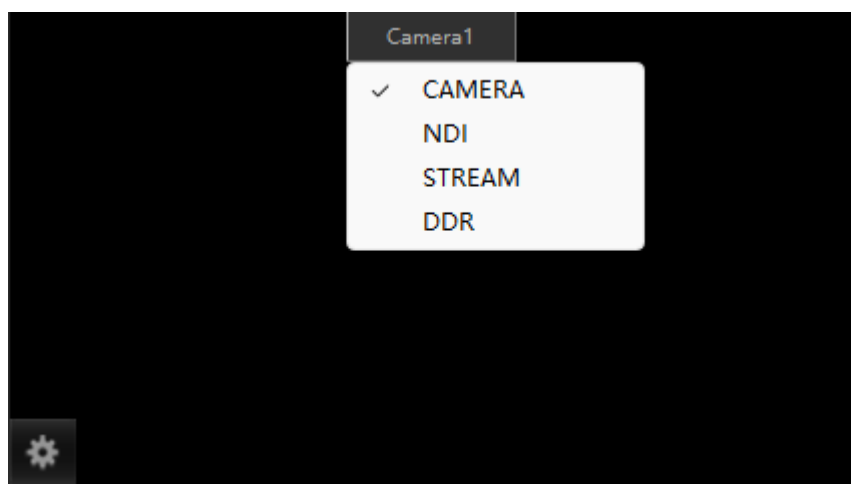
④ Click Apply to set the video resolution and frame rate as shown



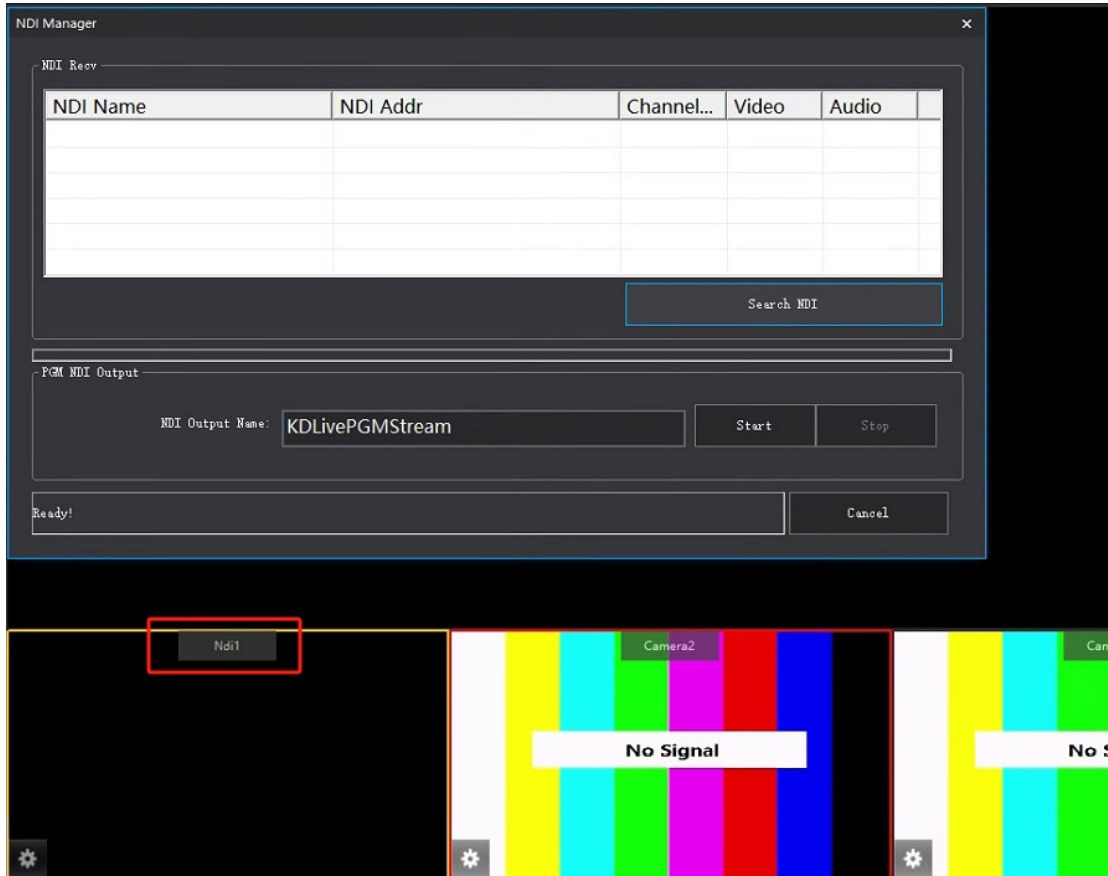
(2)、NDI: indicates the network signal source, which transmits data over the network;

How to set NDI

① Select the NDI option

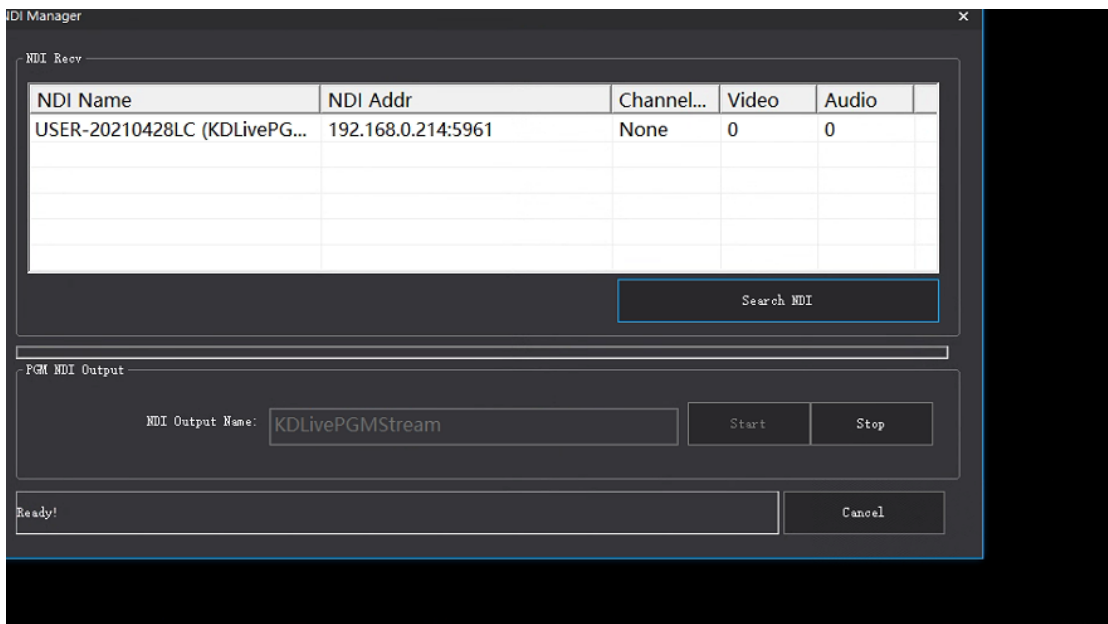


② Click the Settings button in the lower left corner of the small window as shown



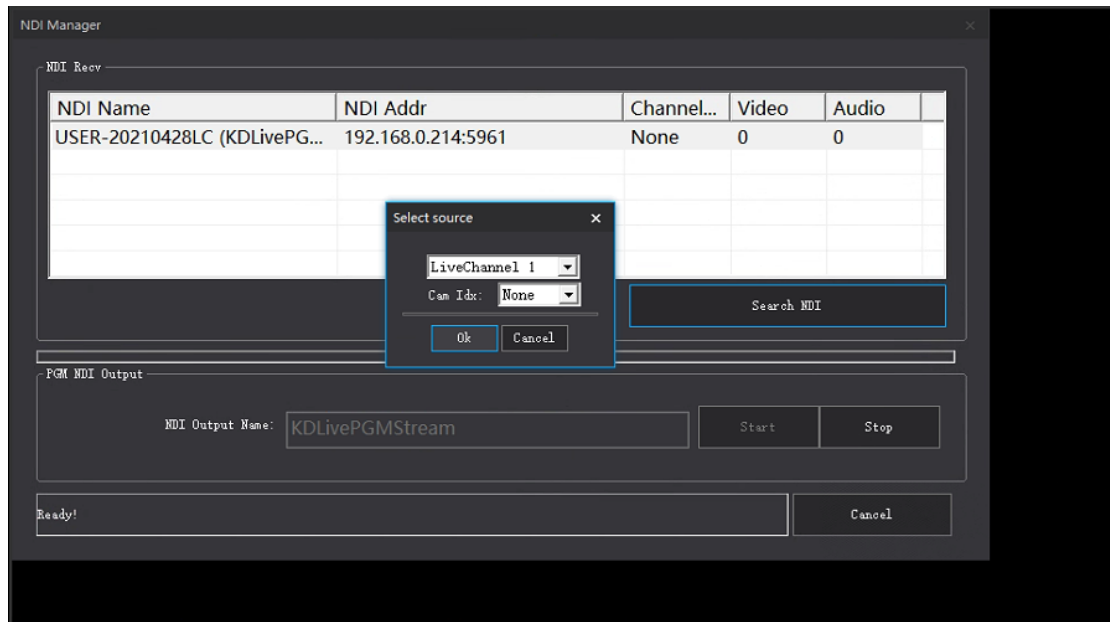
③ After the NDI signal source is enabled, click the search NDI source option in the same LAN,

as shown in the figure



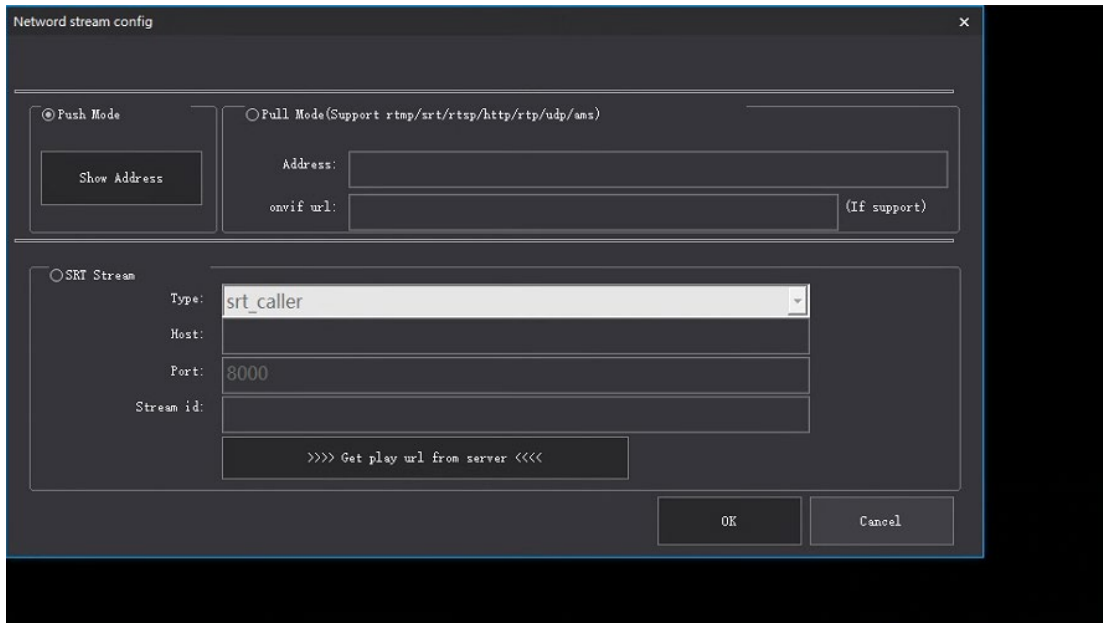
④ Double-click the signal source found, select the corresponding window and cam serial

number (cam represents the control address) and click OK. After the setting is complete, the signal source will be used in the selected window.

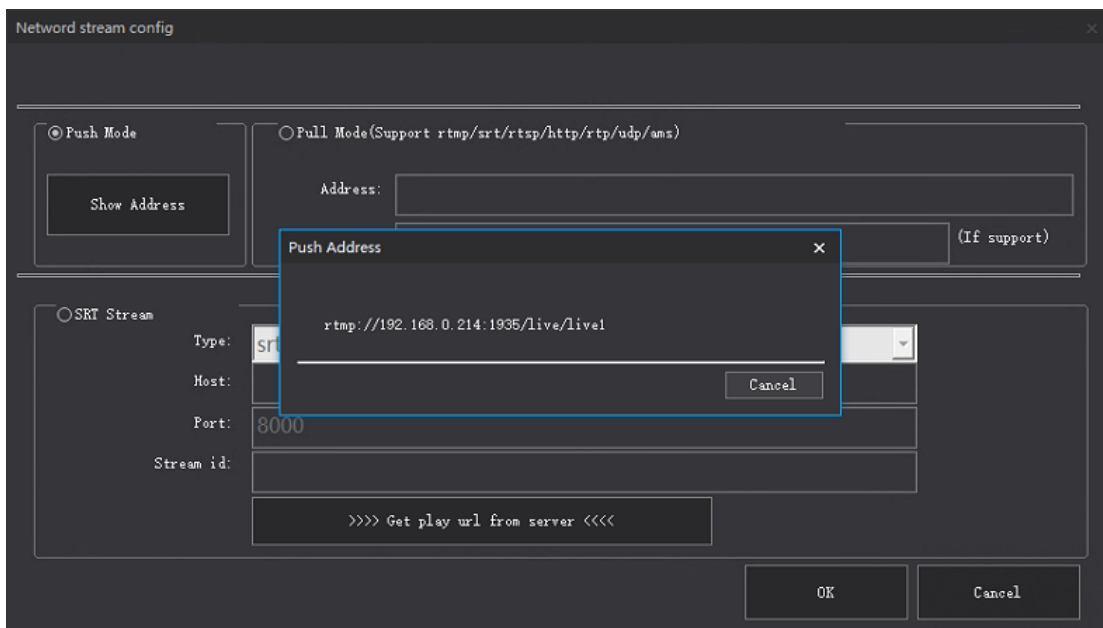


(3)、STREAM:

- ① Switch to STREAM mode;
- ② Click the Settings button in the lower left corner of the preview window;
- ③ STREAM mode is divided into three modes, push mode, pull mode and SRT flow mode.

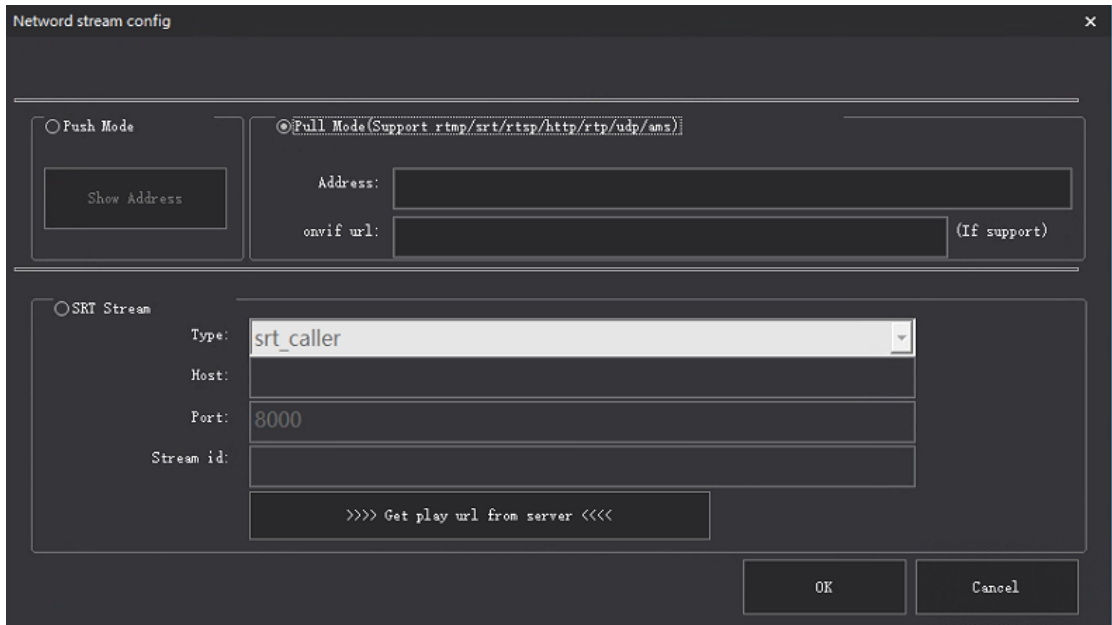


④ Push mode Click to view the push stream address, enter the address into a device with the same mode (in the same LAN), and the push stream will be displayed in the preview window.

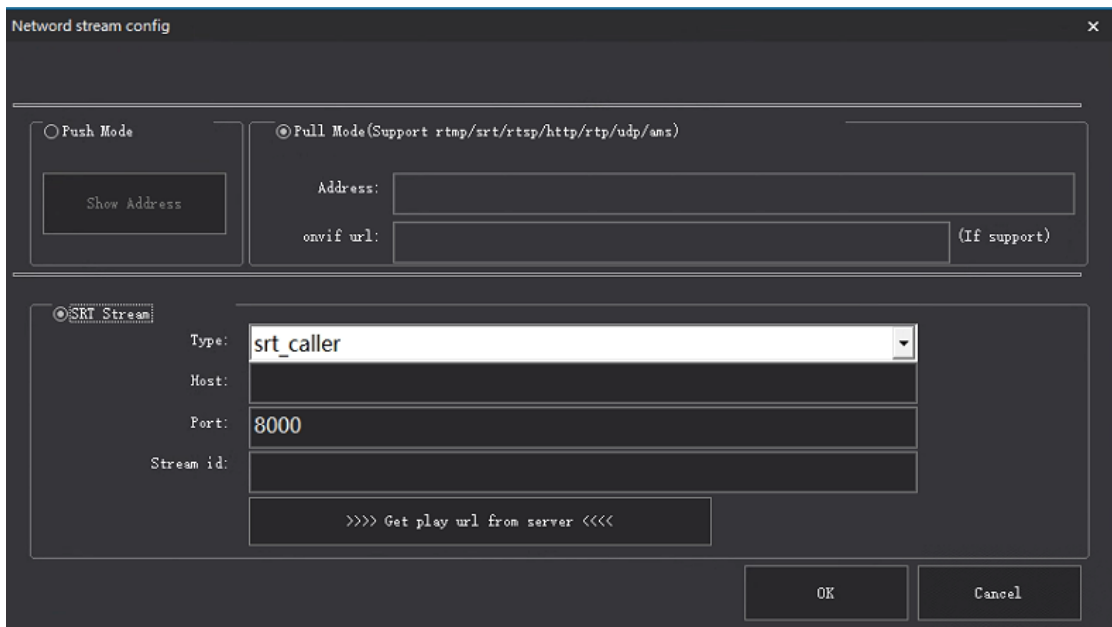


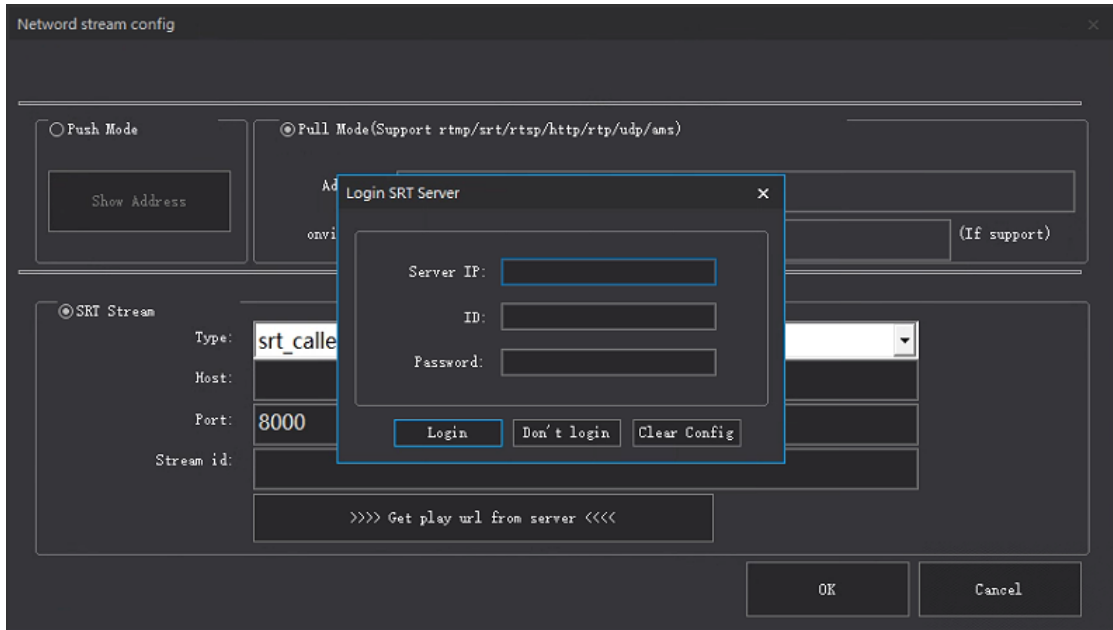
⑤ Pull mode supports RTMP/SRT/RTSP/HTTP/RTP/udp/ams deal

Enter the corresponding address to pull the camera picture to the corresponding preview window.



⑥ SRT output: Pull the picture captured by the camera into the software through the streaming media server for recording and broadcasting, and select the route as shown in the figure (after logging in to the server)

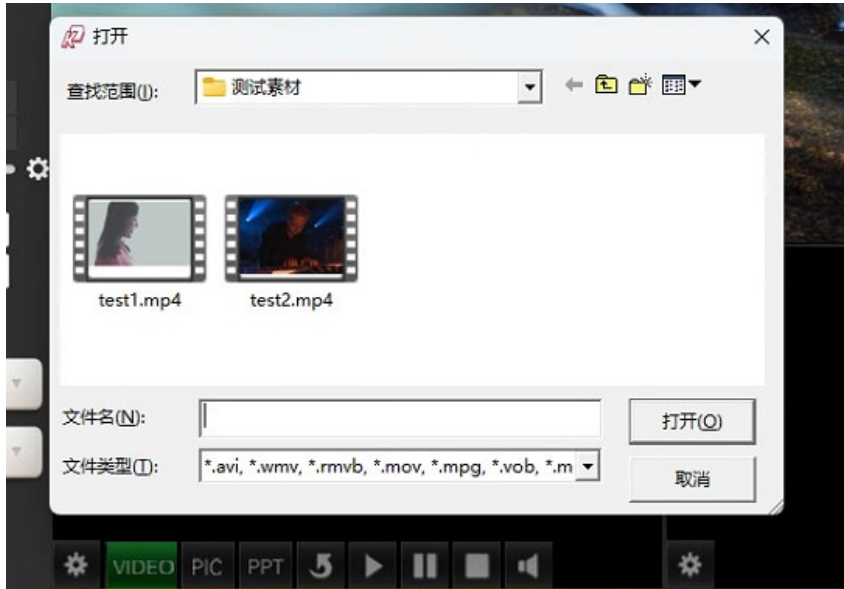




(4)、DDR: Play local videos, pictures, and PPT, as shown in the figure



① Click the VIDEO button under the preview window



② Locate the file Select the file and click the Open button;

③ Preview window to play the selected file (PIC and PPT, PPT need to download the version

of office 2013 or above to use);

五、Contact us

BEIJING KIND NETWORK TECHNOLOGY CO.LTD.

Address: 16C, Unit 1, Building C, Yingdu PLAZA, No. 48, Zhichun Road,
Haidian District, Beijing,China.

Official website:WWW.KINDLIVECAST.COM

Zip Code: 100086

Phone: +86 010-58732646