

LIVECAM STATIONKD-KD-C25UH

Instructions for use

Please read this manual carefully before using the machine and keep it for future reference



Matters needing attention

When installing the device, be sure to read this safety guide carefully and follow the installation instructions strictly.

Keep this specification safe for future reference..

Before connecting the switching power supply of the device to the external power supply, check the voltage of the power supply and pay attention to the control power of the device

Voltage label, the voltage is DC12V.

Use the device in the required temperature and humidity environment. The ambient temperature of the camera ranges from 0 ° C to +40 ° C, and the humidity is less than 90%. Prevent foreign bodies from entering the equipment and corrosive liquid from splashing on the equipment to prevent danger.

During transportation, storage and installation, heavy weight, violent vibration and immersion should be prevented from damaging the product.

Do not disassemble the camera without permission. The relevant work should be carried out by qualified maintenance personnel.

Avoid pointing the camera at bright objects, such as the sun, lights, etc.

Use a dry, soft cloth to clean the camera case. In case of stubborn dirt, use a neutral cleaner to wipe the camera case.

Do not use strong or abrasive cleaners to avoid chafing the camera casing and lens and affecting image quality.

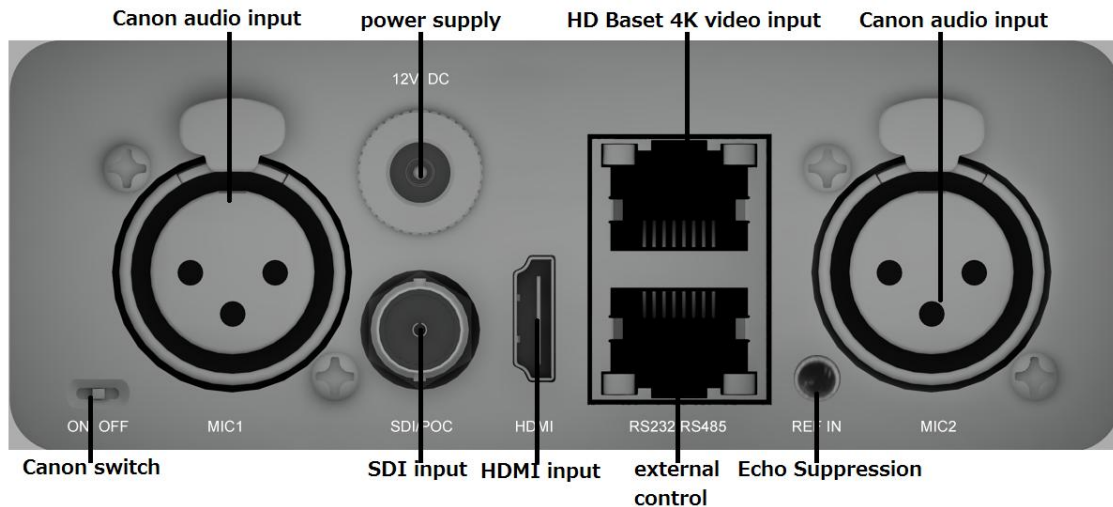
Directory

Product and service disclaimer	4
一、 Product overview	5
二、 Connection specification	6
三、 Camera debugging instructions	7
Note: If the camera cannot be used normally or the parameters are abnormal, it is recommended to restore the default values.	13
四、 Remote control debugging instructions	13
五、 Packing list	15
Camera control all-in-one machine, packing case, instruction manual (electronic file), warranty card, certificate of qualification	16
六、 After-sales service	16
The company provides limited warranty and lifetime repair service.	16

Product and service disclaimer

The information provided in this manual is intended as a guide only and KIND has always strived to provide correct, complete and appropriate information. However, KIND cannot exclude that some information in this manual may be incorrect or incomplete and that this manual may contain typos, omissions of information or incorrect. KIND recommends that you reconfirm the accuracy of the information in this document and that KIND is not liable for any omissions or errors, or for loss or damage caused at any time by the information contained in this Manual. Further information about the contents of this Manual or the products may be obtained by contacting local offices or KIND headquarters.

1、Product overview

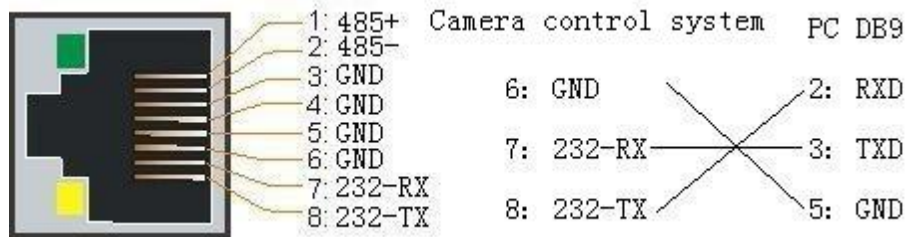


1. 1/2.5 inch Exmor R CMOS imager with broadcast-quality 4K images ;
2. 20x optical zoom, SRZ 4K 30x, HD 40x ;
3. Servo motor high speed head, translation/pitching speed $0.1^{\circ}\sim 300^{\circ}/s$;
4. 4K HDBaseT remote lossless image transmission and control technology ;
5. 8.93 million pixels, 3840×2160 1920*1080 resolution ;
6. 3G-SDI, HDMI, HDBaseT 4K video output ;
7. Audio XLR $\times 2$ input with 48V phantom power supply, embedded audio ;
8. Case and 360 $^{\circ}$ TALLY light ;
9. Application: 4K image shooting, studio, media live broadcasting, multi-camera shooting ;

10. Size: 160mm155mm×230mm; Weight: about 1.6kg ;

2、 Connection specification

The external control protocol supports RS232/RS485. The following figure shows the protocol sequence



Dip switch Settings are as follows

Dip 1:

SW1(1-8bit)								
SwitchNumber	1	2	3	4	5	6	7	8
Address1	OF	OFF	OFF	OFF	OFF	OFF	OFF	
Address2	ON	OF	OFF	OFF	OFF	OFF	OFF	
Address3	OFF	ON	OFF	OFF	OFF	OFF	OFF	
Address4	ON	ON	OFF	OFF	OFF	OFF	OFF	
Address5	OFF	OFF	ON	OFF	OFF	OFF	OFF	
Address6	ON	OFF	ON	OFF	OFF	OFF	OFF	
Address7	OFF	ON	ON	OFF	OFF	OFF	OFF	
RS232								OFF
RS485								ON

Dip 2:

SW2(1-8bit)								
SwitchNumber	1	2	3	4	5	6	7	8
VISCA	OFF	OFF						
PELCO-D	OFF	ON						

2400BPS		OFF	ON	
4800BPS		ON	OFF	
9600BPS		OFF	OFF	
28400BPS		ON	ON	
NORMAL				OFF
TRACE				ON

The camera adopts the VISCA protocol by default, 9600 baud rate

3、Camera debugging instructions

(1)、This section describes the Settings menu of the camera

1. Click the "OK" key of the driver or the "MENU" key of the remote control of the camera to enter the setting graphic menu, as shown in the figure below

RETURN	return	-->
EXPOSURE	Exposure mode	-->
FOUCS	Focusing mode	AUTO
WB	White balance	-->
SYSTEM	system	-->
COLOR	color	-->
IMAGE	IMAGE	-->

(2)、EXPOSURE

1. Automatic mode

RETURN	RETURN	-->	
EXPOSURE	EXPOSURE	AUTO	Automatic mode
GAIN	GAIN	001	
SHUTTER	SHUTTER	018	
IRIS	IRIS	019	
BRIGHT	BRIGHT	019	

EXPCOMP	EXPCOMP	OFF	
LEVEL	LEVEL	007	
BLC	BLC	OFF	

2. Luminance priority mode

RETURN	RETURN	-->	
EXPOSURE	EXPOSURE	BRIGHT	BRIGHT
GAIN	GAIN	001	
SHUTTER	SHUTTER	018	
IRIS	IRIS	019	
BRIGHT	BRIGHT	019	
EXPCOMP	EXPCOMP	OFF	
LEVEL	LEVEL	007	
BLC	BLC	OFF	

3. Gain priority

RETURN	RETURN	-->	
EXPOSURE	EXPOSURE	GAIN	GAIN
GAIN	GAIN	001	
SHUTTER	SHUTTER	018	
IRIS	IRIS	019	
BRIGHT	BRIGHT	019	
EXPCOMP	EXPCOMP	OFF	
LEVEL	LEVEL	007	
BLC	BLC	OFF	

4. **SHUTTER**

RETURN	RETURN	-->	
--------	--------	-----	--

EXPOSURE	EXPOSURE	SHUTTER	SHUTTER
GAIN	GAIN	001	
SHUTTER	SHUTTER	018	
IRIS	IRIS	019	
BRIGHT	BRIGHT	019	
EXPCOMP	EXPCOMP	OFF	
LEVEL	LEVEL	007	
BLC	BLC	OFF	

5. MANUAL

RETURN	RETURN	-->	
EXPOSURE	EXPOSURE	MANUAL	MANUAL
GAIN	GAIN	001	
SHUTTER	SHUTTER	018	
IRIS	IRIS	019	
BRIGHT	BRIGHT	019	
EXPCOMP	EXPCOMP	OFF	
LEVEL	LEVEL	007	
BLC	BLC	OFF	

(3) FOUCS

RETURN	RETURN	-->
EXPOSURE	EXPOSURE	AUTO
FOUCS	FOUCS	-->
WB	WB	-->
SYSTEM	SYSTEM	-->
COLOR	COLOR	-->
IMAGE	IMAGE	-->

(1) autofocus

RETURN	RETURN	-->
--------	--------	-----

EXPOSURE	EXPOSURE	AUTO
FOUCS	FOUCS	AUTO
WB	WB	-->
SYSTEM	SYSTEM	-->
COLOR	COLOR	-->
IMAGE	IMAGE	-->

(2) Manual focusing

RETURN	RETURN	-->
EXPOSURE	EXPOSURE	AUTO
FOUCS	FOUCS	MANUAL
WB	WB	-->
SYSTEM	SYSTEM	-->
COLOR	COLOR	-->
IMAGE	IMAGE	-->

(4) **WB**

RETURN	RETURN	-->	
WB	WB	AUTO	AUTO
RGAIN	RGAIN	211	
BGAIN	BGAIN	156	

1. OUTDOOR

RETURN	RETURN	-->	
WB	WB	OUTDOOR	OUTDOOR
RGAIN	RGAIN	211	
BGAIN	BGAIN	156	

2. INDOOR

RETURN	RETURN	-->	
WB	WB	INDOOR	INDOOR
RGAIN	RGAIN	211	
BGAIN	BGAIN	156	

3. ONE PUSH

RETURN	RETURN	-->	
WB	WB	ONE PUSH	ONE PUSH
RGAIN	RGAIN	211	
BGAIN	BGAIN	156	

4. ATW

RETURN	RETURN	-->	
WB	WB	ATW	ATW
RGAIN	RGAIN	211	
BGAIN	BGAIN	156	

(5) SYSTEM

RETURN	RETURN	-->	
EXPOSURE	EXPOSURE	AUTO	
FOUCS	FOUCS	-->	
WB	WB	-->	
SYSTEM	SYSTEM	-->	
COLOR	COLOR	-->	
IMAGE	IMAGE	-->	
RETURN	RETURN	-->	
WB	WB	OUTDOOR	OUTDOOR
F-RATE	F-RATE	1080I50	
RESET	RESET	OFF	OFF

Press the left arrow key to select different resolutions, and click PRSET to reset the system.

(6) COLOR

RETURN	RETURN	-->	
EXPOSURE	EXPOSURE	AUTO	
FOUCS	FOUCS	-->	
WB	WB	-->	
SYSTEM	SYSTEM	-->	
COLOR	COLOR	-->	
IMAGE	IMAGE	-->	

Press the left arrow key to appear the following picture

RETURN	RETURN	-->
GAIN	GAIN	004
HUE	HUE	007

You can adjust the GAIN and HUE parameters to adjust the color.

(7) IMAGE

RETURN	RETURN	-->
EXPOSURE	EXPOSURE	AUTO
FOUCS	FOUCS	-->
WB	WB	-->
SYSTEM	SYSTEM	-->
COLOR	COLOR	-->
IMAGE	IMAGE	-->

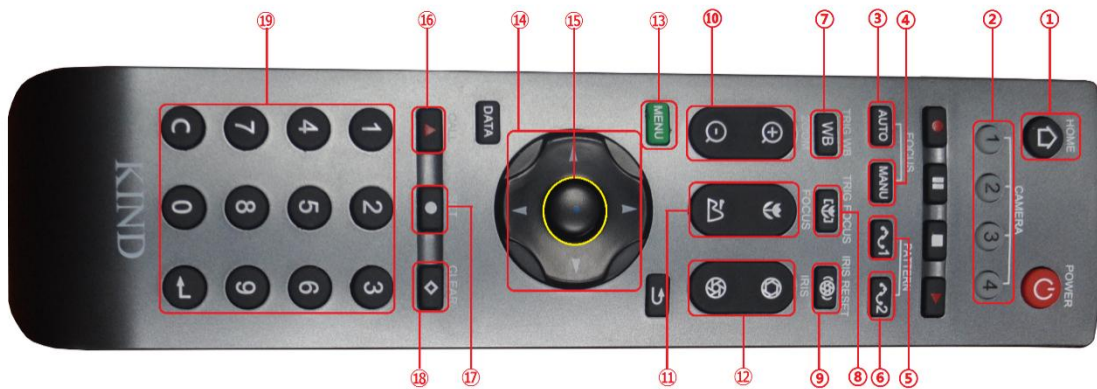
Press the left arrow key to appear the following picture

RETURN	RETURN	-->	
E-PLIP	E-PLIP	OFF	OFF
LR REV	LR REV	OFF	
RREEZE	RREEZE	OFF	
B & W	B & W	OFF	
STAB	STAB	OFF	
COL BAR	COL BAR	OFF	
SRZ MOD	SRZ MOD	OFF	

The preceding function options are in the OFF state by default.

Note: If the camera cannot be used normally or the parameters are abnormal, it is recommended to restore the default values.

4、Remote control debugging instructions



①HOME button: Press once to bring the lens to the starting point.

②CAMERA: Switches the address of the control camera, which must correspond to the dip switch of the camera. After the switch, you can set the camera.

③Auto focus button: You can directly use this key to control the one-button focus of the camera.

④Manual focus mode: Press this key to switch the camera's focus mode to manual focus mode.

⑤4K signal switch key: Use this key to switch to 4K30 signal with one click (after setting, you need to restart the camera to make it take effect).

⑥1080 i50 Signal Switch key: Use this key to switch to 1080 i50 signal with one key (After setting, you need to restart the camera for the setting to take effect).

⑦Single white balance: This button is pressed once to achieve a white balance.

⑧Single focus: This button is pressed once to achieve one focus.

⑨Single Stop: This button is pressed once to achieve one stop exposure.

⑩Adjust camera focus: + for pull in - for pull out.

⑪Focus button: After the automatic focus is changed to manual focus ,

⑫Adjust aperture : Change the shutter speed

⑬Menu key: You can open all the function options of the camera. All the contents of the camera instructions can be manipulated from the options.

⑭Up, down, left and Right keys: After entering the menu interface, you can select the contents of the menu by pressing the up, down, left and right keys.

⑮Ok key: Press this key to confirm after selecting the option.

⑯CALL key: Select the confirm key for the preset point.

⑰SET key: Confirm key for setting camera preset points.

⑱CLEAR key: Confirm key to clear preset points.

⑲Preset point selection key: 9 groups of preset points can be selected.

Steps to set preset points.

(1)Position the camera.

(2)Select one of the keys 1-9.

(3)Press the SET key to complete the setting.

Invoke the preset point step :

(1)Select the prefab bit key that was set earlier.

(2)Press the CALL key and the camera lens will return to the preset position.

Clear preset point step :

(1)Select the preset key you want to delete.

(2)Click the CLEAR key to complete the clearing

After the camera is started, the lens is not in the starting position (the camera will be in the center position after the camera is started). Firstly, press the 0 key, and then press the CLEAR key to power off and restart the camera. After the camera is started, the lens will return to the middle position.

5、 Packing list

When opening the package, please check all the attachments that came with it.



Camera control all-in-one machine, packing case, instruction manual (electronic file), warranty card, certificate of qualification

6、After-sales service

Dear users, in order to ensure that you fully enjoy the quality service, please carefully read the following product service regulations.

The company provides limited warranty and lifetime repair service.

1. The warranty period is 12 months from the date of sale. During the limited warranty period, you will enjoy free warranty service for product faults, which will be repaired by the user or sent to the company (faults caused by improper use, human failure or irresistible causes are not covered by the warranty). 2. In the limited warranty period of more than 12 months, the fault of the product will be paid lifetime maintenance service.

1. Maintenance response time

2. From the date when users send products to the company, 24-hour response service, switchboard telephone : +86 010-58732647.
3. Before sending the product back to our company, please contact the relevant technical personnel of our company in advance and then send the product back to our company. Otherwise, the maintenance is not timely, so as not to affect your use.